

(SND0A1.SND0A) (OBSTACLE) 09239 SL-5369 (FAA) STAUNTON/SHENANDOAH VALLEY RGNL (SHD)
SHENANDOAH ONE DEPARTURE STAUNTON-WAYNESBORO-HARRISONBURG, VIRGINIA

POTOMAC DEP CON
 132.85 257.75
 CTAF 123.0
 AWOS-3 124.925

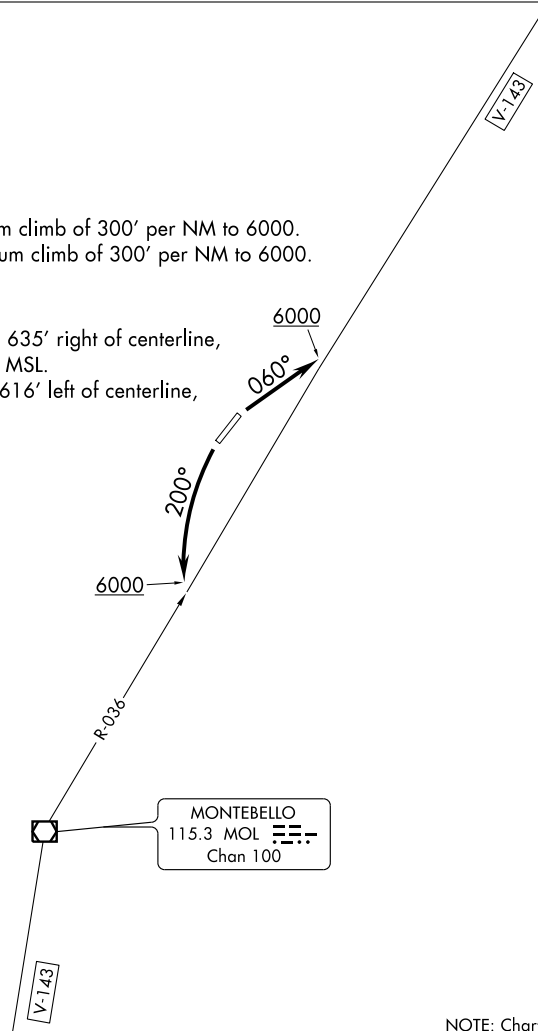
NOTE: RADAR Required.

TAKE-OFF MINIMUMS:

Rwy 5, Standard with minimum climb of 300' per NM to 6000.
 Rwy 23, Standard with minimum climb of 300' per NM to 6000.

TAKE-OFF OBSTACLES:

Rwy 5, Trees 1720' from DER, 635' right of centerline,
 up to 100' AGL/1279' MSL.
 Rwy 23, Tree 679' from DER, 616' left of centerline,
 35' AGL/1194' MSL.



NE-3, 22 OCT 2009 to 19 NOV 2009

NE-3, 22 OCT 2009 to 19 NOV 2009



DEPARTURE ROUTE DESCRIPTION

TAKE-OFF RUNWAY 5: Climb heading 060° to 6000 to intercept MOL VOR/DME R-036 outbound, thence. . . .

TAKE-OFF RUNWAY 23: Climbing left turn to 6000 heading 200° to intercept MOL VOR/DME R-036 inbound, thence. . . .

. . . . expect radar vectors to filed/assigned route. Expect clearance to filed altitude/flight level 10 minutes after departure.