

# RNAV (GPS) RWY 23

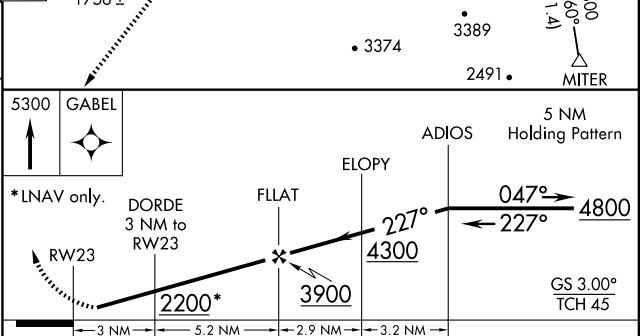
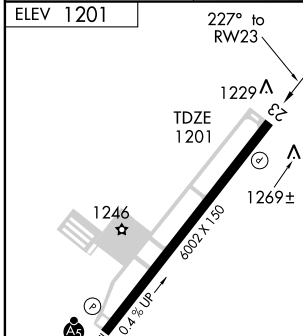
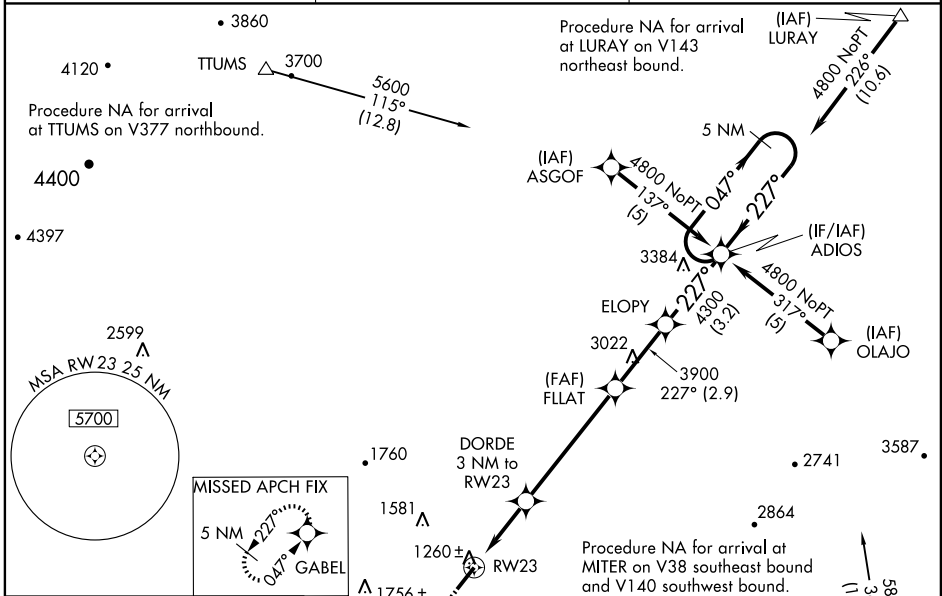
STAUNTON/ SHENANDOAH VALLEY RGNL (SHD)

WAAS CH <b>78113</b> <b>W23A</b>	APP CRS <b>227°</b>	Rwy Idg TDZE Apt Elev	<b>6002</b> <b>1201</b> <b>1201</b>
--	------------------------	-----------------------------	---

**▼** Baro-VNAV NA when using Charlottesville altimeter setting.  
**▲** For uncompensated Baro-VNAV systems, LNAV/VNAV NA below 17°C (2°F) or above 47°C (116°F). DME/DME RNP-0.3 NA. Visibility reduction by helicopters NA. When local altimeter setting not received, use Charlottesville altimeter setting and increase all DA 130 feet, all MDA 140 feet. Increase LPV and LNAV/VNAV all Cats visibility ¼ mile, LNAV Cat C visibility ¼ mile and LNAV Cat D and Circling Cat D visibility ½ mile.

MISSED APPROACH: Climb to 5300 direct GABEL and hold, continue climb-in-hold to 5300.

AWOS-3 <b>124.925</b>	POTOMAC APP CON <b>132.85 257.75</b>	UNICOM (CTAF) <b>123.0</b>
--------------------------	---	----------------------------



CATEGORY	A	B	C	D
LPV DA		1451-1	250 (300-1)	
LNAV/VNAV DA		1530-1¼	329 (400-1¼)	
LNAV MDA		1520-1	319 (400-1)	
CIRCLING	1600-1	1660-1	1660-1½	1820-2
	399 (400-1)	459 (500-1)	459 (500-1½)	619 (700-2)

# RNAV (GPS) RWY 23

NE-3, 22 OCT 2009 to 19 NOV 2009

NE-3, 22 OCT 2009 to 19 NOV 2009