
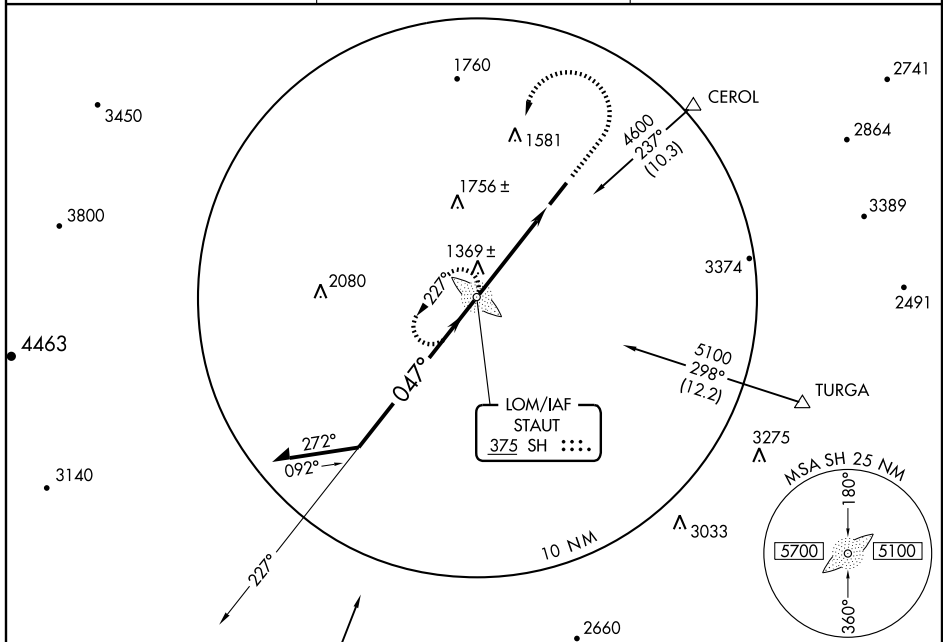


LOM SH <b>375</b>	APP CRS <b>047°</b>	Rwy Idg <b>6002</b>	TDZE <b>1184</b>	Apt Elev <b>1201</b>
----------------------	------------------------	------------------------	---------------------	-------------------------

**⚠** When local altimeter setting not received, use Charlottesville altimeter setting: increase all MDAs 140 feet and visibility S-5 and Circling Cat C/D ½ mile.

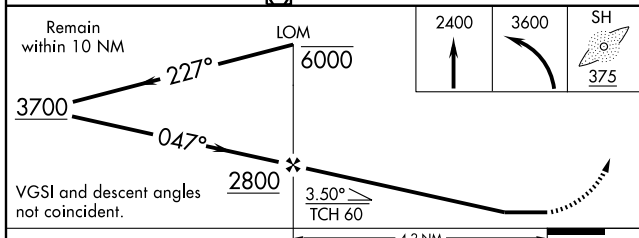
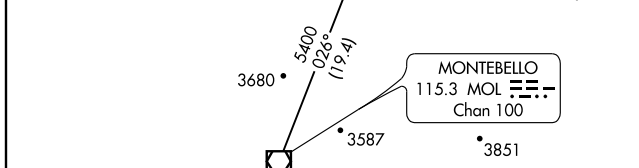
**MALSR**  
 **MISSED APPROACH:** Climb to 2400 then climbing left turn to 3600 direct SH LOM and hold.

AWOS-3 <b>124.925</b>	POTOMAC APP CON <b>132.85 257.75</b>	UNICOM <b>123.0 (CTAF) 0</b>
--------------------------	-----------------------------------------	---------------------------------



NE-3, 22 OCT 2009 to 19 NOV 2009

NE-3, 22 OCT 2009 to 19 NOV 2009



CATEGORY	A	B	C	D
S-5	1760-¾ 576 (600-¾)	1760-1 576 (600-1)	1760-1½ 576 (600-1½)	1760-2 619 (700-2)
CIRCLING	1760-1 559 (600-1)	1760-1½ 559 (600-1½)	1820-2 619 (700-2)	

