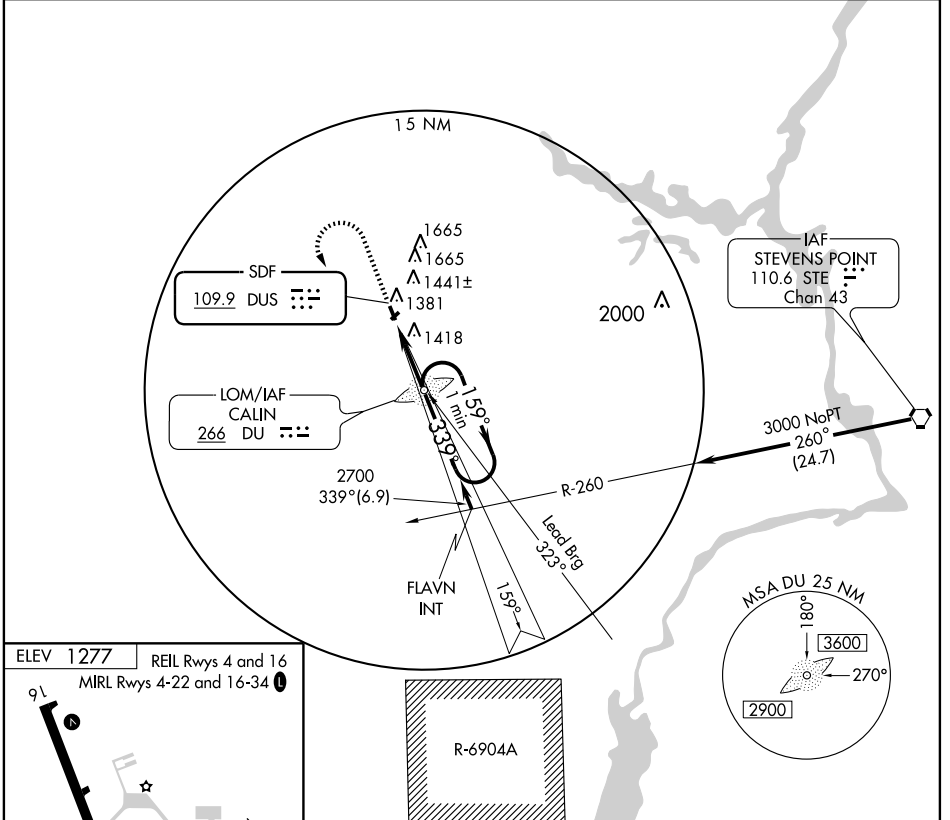


**SDF RWY 34**  
MARSHFIELD MUNI (MFI)

SDF DUS <b>109.9</b>	APP CRS <b>339°</b>	Rwy Idg TDZE Apt Elev	<b>5000</b> <b>1257</b> <b>1277</b>
-------------------------	------------------------	-----------------------------	---

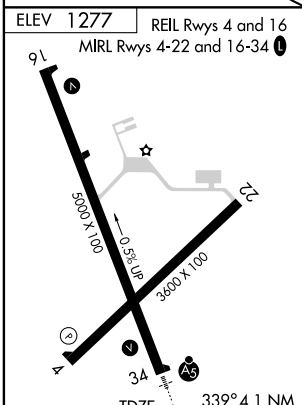
For inoperative MALSIR, increase S-34 Cat D visibility to 1¼. ADF REQUIRED		MISSED APPROACH: Climb to 3000 then left turn direct CALIN LOM and hold.
---	--	--

ASOS <b>121.575</b>	MINNEAPOLIS CENTER <b>124.4 317.7</b>	UNICOM <b>123.0 (CTAF)</b>
------------------------	--	-------------------------------

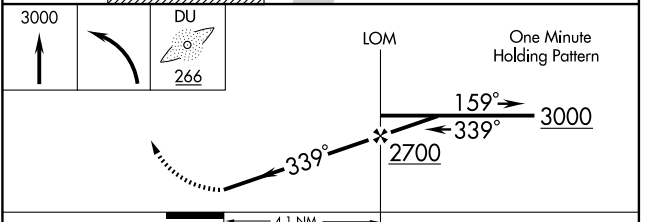


EC-3, 22 OCT 2009 to 19 NOV 2009

EC-3, 22 OCT 2009 to 19 NOV 2009



FAF to MAP 4.1 NM					
Knots	60	90	120	150	180
Min:Sec	4:06	2:44	2:03	1:38	1:22



CATEGORY	A	B	C	D
S-34	1640-½ 383 (400-½)			1640-1 383 (400-1)
CIRCLING	1700-1 423 (500-1)	1740-1 463 (500-1)	1740-1½ 463 (500-1½)	1840-2 563 (600-2)