


RNAV (GPS) RWY 34

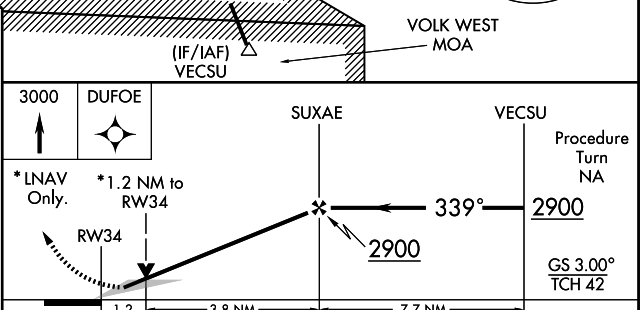
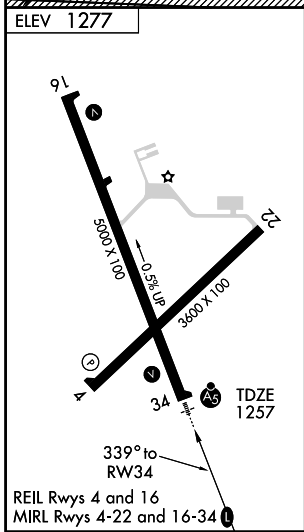
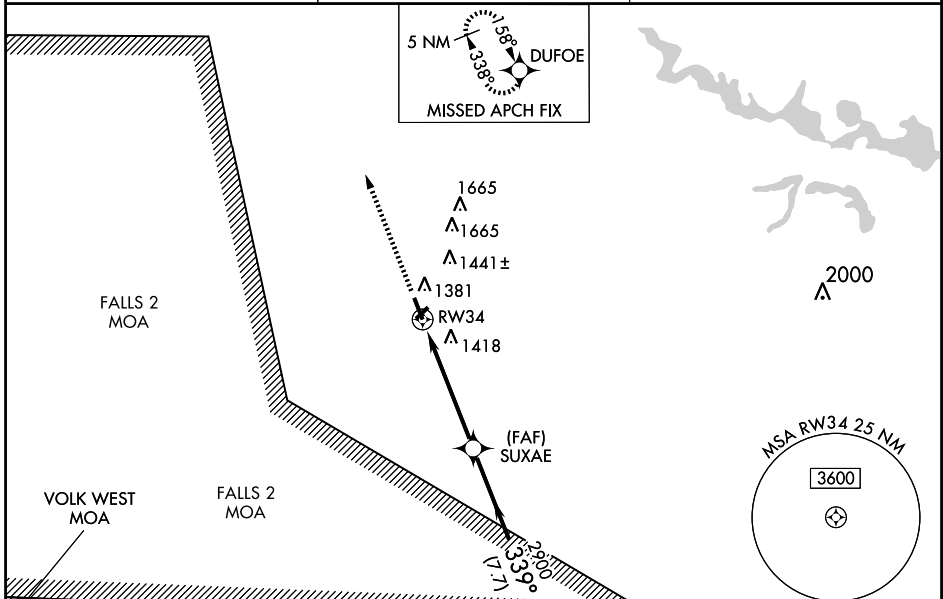
MARSHFIELD MUNI (MFI)

WAAS CH 58101 W34A	APP CRS 339°	Rwy Idg TDZE 1257 Apt Elev 1277
--	------------------------	---

For inoperative MALS increase LPV all Cats visibility to 1, increase LNAV Cats A and B to 1 and Cat D to 1½. If local altimeter setting not received, use Central Wisconsin altimeter setting and increase all DAs/MDAs 60 feet. VDP and Baro-VNAV NA when using Central Wisconsin altimeter setting. For uncompensated Baro-VNAV systems, LNAV/VNAV NA below -17° C (2° F) or above 46° C (115° F). DME/DME RNP-0.3 NA.

MALS  MISSED APPROACH: Climb to 3000 direct DUFOE and hold.

ASOS 121.575	MINNEAPOLIS CENTER 124.4 317.7	UNICOM 123.0 (CTAF)
------------------------	--	-------------------------------



CATEGORY	A	B	C	D
LPV DA		1507-¾	250 (300-¾)	
LNAV/ VNAV DA		1717-1¼	460 (500-1¼)	
LNAV MDA		1680-¾	423 (500-¾)	1680-1 423 (500-1)
CIRCLING	1720-1¾ 443 (500-1¾)	1740-1¾	463 (500-1¾)	1840-2 563 (600-2)

EC-3, 22 OCT 2009 to 19 NOV 2009

EC-3, 22 OCT 2009 to 19 NOV 2009