

RNAV (GPS) RWY 16

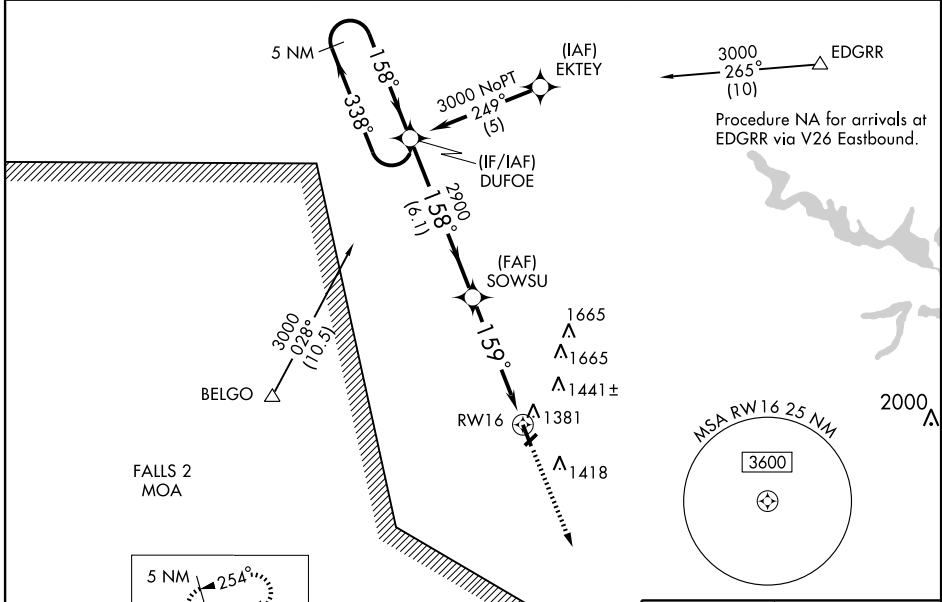
MARSHFIELD MUNI (MFI)

WAAS CH 99501 W16A	APP CRS 159°	Rwy Idg 5000 TDZE 1277 Apt Elev 1277
--	------------------------	---

▼ DME/DME RNP-0.3 NA. Visibility reduction by helicopters NA. If local altimeter setting not received, use Central Wisconsin altimeter setting and increase all DAs/MDAs 60 feet.
▲ Baro-VNAV NA when using Central Wisconsin altimeter setting. For uncompensated Baro-VNAV systems, LNAV/VNAV NA below -17°C (2°F) or above 46°C (115°F).

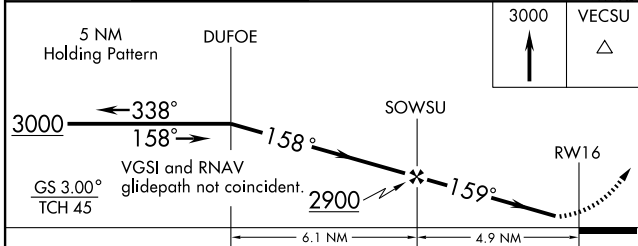
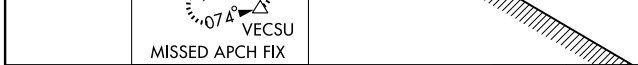
MISSED APPROACH: Climb to 3000 direct VECSU and hold.

ASOS 121.575	MINNEAPOLIS CENTER 124.4 317.7	UNICOM 123.0 (CTAF) ①
------------------------	--	---------------------------------



EC-3, 22 OCT 2009 to 19 NOV 2009

EC-3, 22 OCT 2009 to 19 NOV 2009



CATEGORY	A	B	C	D
LPV DA	1596-1 319 (400-1)			
LNAV/DA/VNAV	1641-1¼ 364 (400-1¼)			
LNAV MDA	1640-1 363 (400-1)		1640-1¼ 363 (400-1¼)	
CIRCLING	1700-1¼ 423 (500-1¼)	1740-1¼ 463 (500-1¼)	1740-1½ 463 (500-1½)	1840-2 563 (600-2)

