

# VOR RWY 18

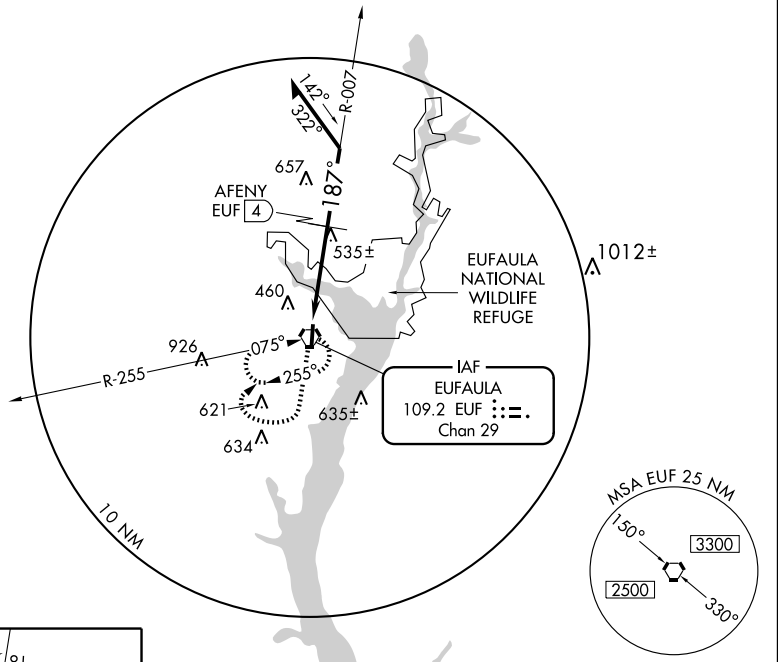
EUFAULA/ WEEDON FIELD (EUF)

VORTAC EUF	APP CRS	Rwy Idg	5000
109.2	187°	TDZE	285
Chan 29		Apt Elev	285

**▲ NA** Use Clayton altimeter setting; when not received, use Columbus, GA altimeter setting and increase all MDAs 40 feet and AFENY Fix Minimums Circling Cat. C and D visibility ¼ mile.

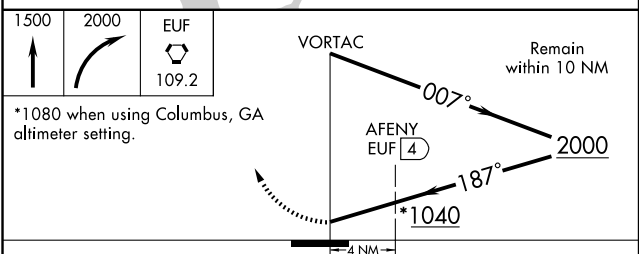
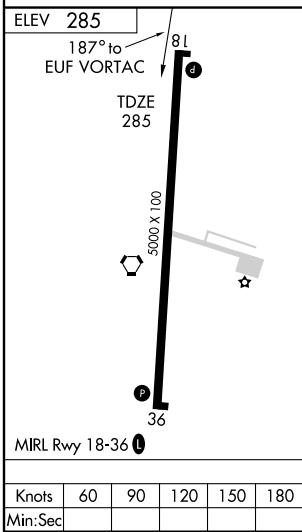
**MISSED APPROACH:** Climb to 1500 then climbing right turn to 2000 direct EUF VORTAC and hold.

CLAYTON AWOS-3 118.775	ATLANTA APP CON * 125.5 323.1	CINC DEL 134.25 339.8	UNICOM 122.8 (CTAF) <b>0</b>
---------------------------	----------------------------------	--------------------------	---------------------------------



SE-4, 22 OCT 2009 to 19 NOV 2009

SE-4, 22 OCT 2009 to 19 NOV 2009



CATEGORY	A	B	C	D
S-18	1040-1 755 (800-1)	1040-1¼ 755 (800-1¼)	1040-2¼ 755 (800-2¼)	1040-2½ 755 (800-2½)
CIRCLING	1040-1 755 (800-1)	1040-1¼ 755 (800-1¼)	1040-2¼ 755 (800-2¼)	1040-2½ 755 (800-2½)
AFENY FIX MINIMUMS				
S-18	900-1	615 (700-1)	900-1¾ 615 (700-1¾)	900-2 615 (700-2)
CIRCLING	920-1	635 (700-1)	920-1¾ 635 (700-1¾)	920-2 635 (700-2)