

EUFALA, ALABAMA

AL-5367 (FAA)

RNAV (GPS) RWY 18

EUFALA/WEEDON FIELD (EUF)

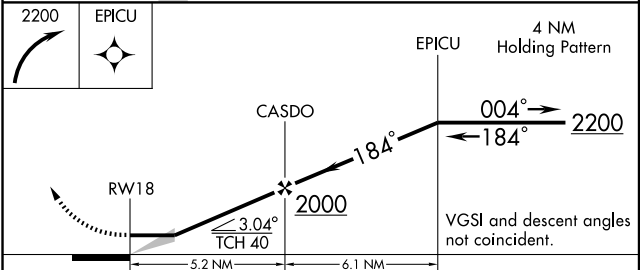
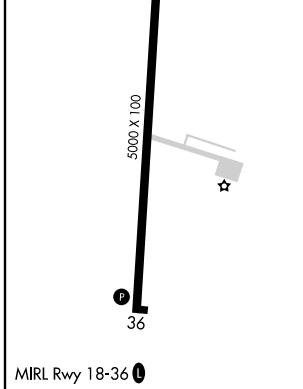
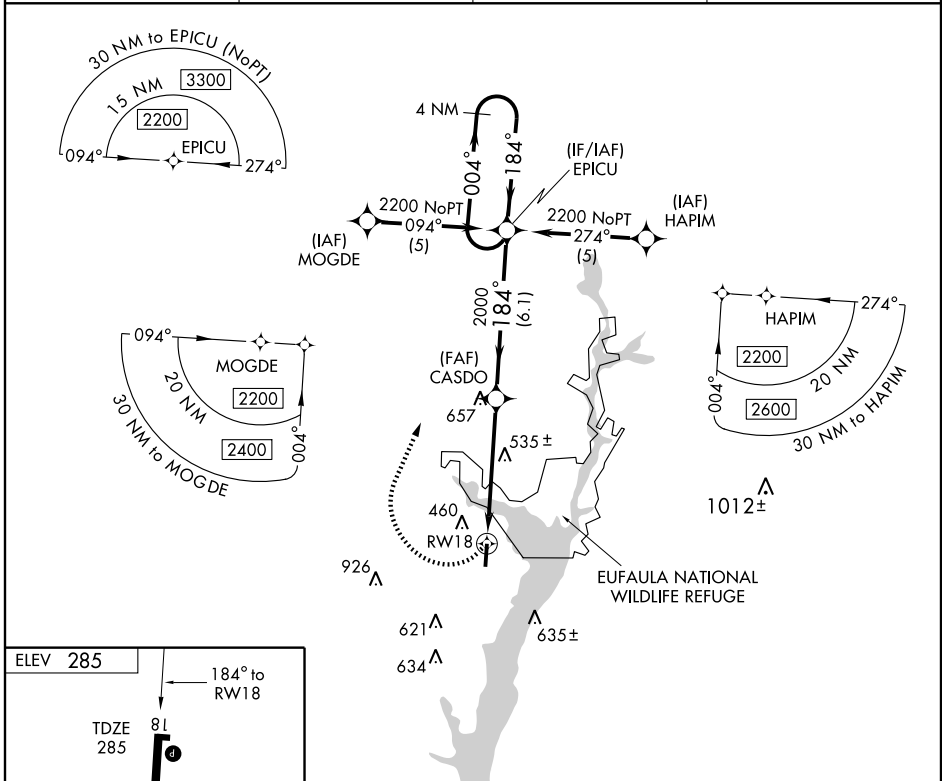
APP CRS	Rwy Idg	5000
184°	TDZE	285
	Apt Elev	285

▼ Use Clayton altimeter setting; when not received, use Columbus, GA altimeter setting and increase all MDAs 40 feet, and Circling Cat. C and D visibility ¼ mile. DME/DME RNP-0.3 NA.

▲ NA

MISSED APPROACH: Climbing right turn to 2200 direct EPICU and hold.

CLAYTON AWOS-3 118.775	ATLANTA APP CON * 125.5 323.1	CINC DEL 134.25 339.8	UNICOM 122.8 (CTAF) 0
----------------------------------	---	---------------------------------	---------------------------------



CATEGORY	A	B	C	D
LNAV MDA	900-1	615 (700-1)	900-1¾ 615 (700-1¾)	900-2 615 (700-2)
CIRCLING	920-1	635 (700-1)	920-1¾ 635 (700-1¾)	920-2 635 (700-2)

EUFALA, ALABAMA
Orig 07354

31° 57' N - 85° 08' W

RNAV (GPS) RWY 18

SE-4, 22 OCT 2009 to 19 NOV 2009

SE-4, 22 OCT 2009 to 19 NOV 2009