

SALEM, ILLINOIS

AL-5364 (FAA)

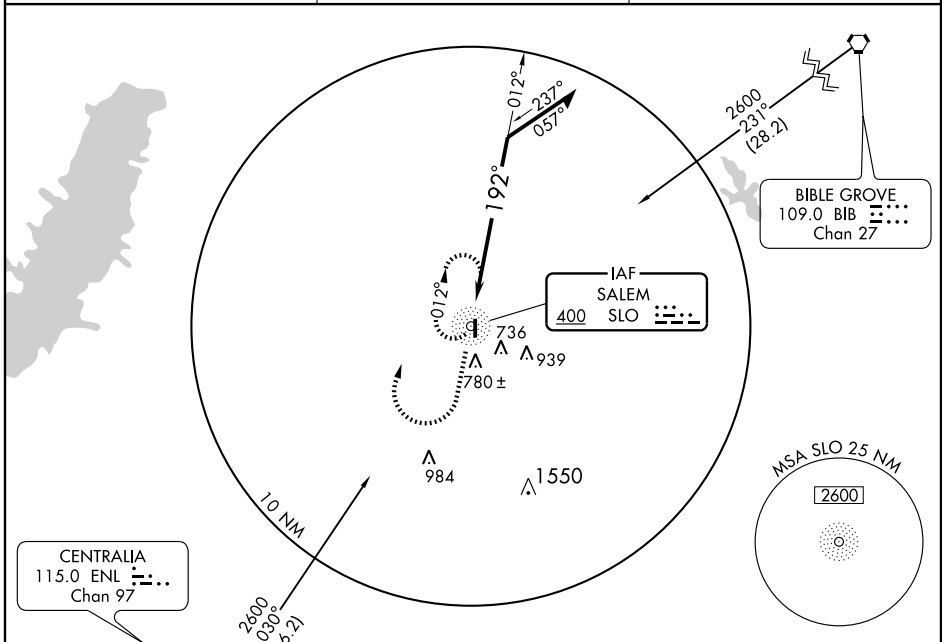
NDB RWY 18

SALEM-LECKRONE (SLO)

NDB SLO 400	APP CRS 192°	Rwy Idg TDZE Apt Elev	4098 573 573
-----------------------	------------------------	-----------------------------	---

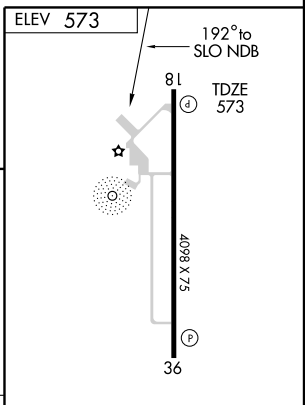
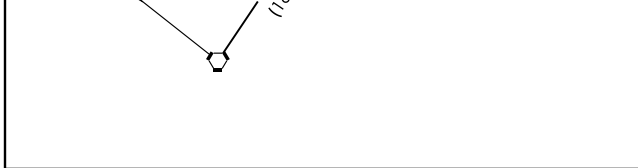
NA MISSED APPROACH: Climb to 1900, then climbing right turn to 2600 to SLO NDB and hold.

AWOS-3 118.525	KANSAS CITY CENTER 127.7 317.7	UNICOM 122.8 (CTAF) 0
--------------------------	--	---------------------------------



EC-3, 22 OCT 2009 to 19 NOV 2009

EC-3, 22 OCT 2009 to 19 NOV 2009



1900	2600	SLO 400	NDB	012°	2300*	192°	Remain within 10 NM	* Maintain 2600 or above until established outbound on procedure turn.
------	------	------------	-----	------	-------	------	---------------------	--

CATEGORY	A	B	C	D
S-18	1260-1	687 (700-1)	1260-2 687 (700-2)	1260-2 1/4 687 (700-2 1/4)
CIRCLING	1260-1	687 (700-1)	1260-2 687 (700-2)	1260-2 1/4 687 (700-2 1/4)

REIL Rwy 18 0	MIRL Rwy 18-36 0				
Knots	60	90	120	150	180
Min:Sec					

SALEM, ILLINOIS
Amdt 10B 05356

38° 39' N - 88° 58' W

SALEM-LECKRONE (SLO) NDB RWY 18