

# RNAV (GPS) RWY 18

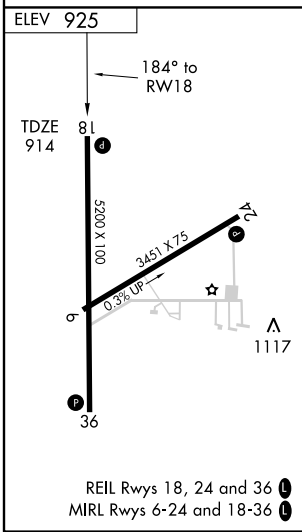
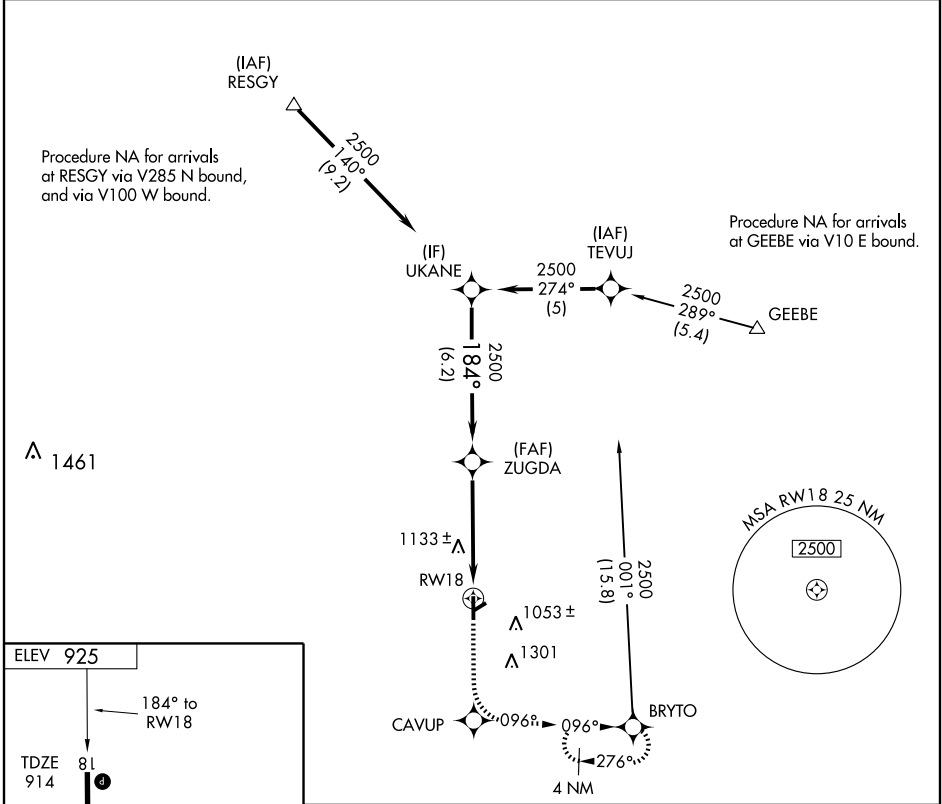
STURGIS/KIRSCH MUNI (IRS)

APP CRS <b>184°</b>	Rwy Idg <b>5200</b>
	TDZE <b>914</b>
	Apt Elev <b>925</b>

**⚠** DME/DME RNP-0.3 NA. Visibility reduction by helicopters NA.  
**⚠** When local altimeter setting not received, use Three Rivers altimeter setting and increase all MDAs 40 feet and LNAV Cat C and D visibility ¼ mile.

**MISSED APPROACH:** Climb to 3000 direct CAVUP and via 096° track to BRYTO and hold.

AWOS-3 <b>121.325</b>	KALAMAZOO APP CON ★ <b>121.2 340.9</b>	CLNC DEL <b>133.55</b>	UNICOM <b>123.05 (CTAF) ①</b>
--------------------------	---	---------------------------	----------------------------------



	UKANE	ZUGDA	CAVUP	BRYTO
			3000	TRK 096°
Procedure Turn NA	2500	2500		
	184°	184°		
	VGS1 and descent angles not coincident.		3.05° TCH 40	
	6.2 NM		4.8 NM	
CATEGORY	A	B	C	D
LNAV MDA	1400-1	486 (500-1)	1400-1¼ 486 (500-1¼)	1400-1½ 486 (500-1½)
CIRCLING	1420-1	495 (500-1)	1440-1½ 515 (600-1½)	1620-2¼ 695 (700-2¼)

EC-1, 22 OCT 2009 to 19 NOV 2009

EC-1, 22 OCT 2009 to 19 NOV 2009