

STURGIS, MICHIGAN

AL-5362 (FAA)

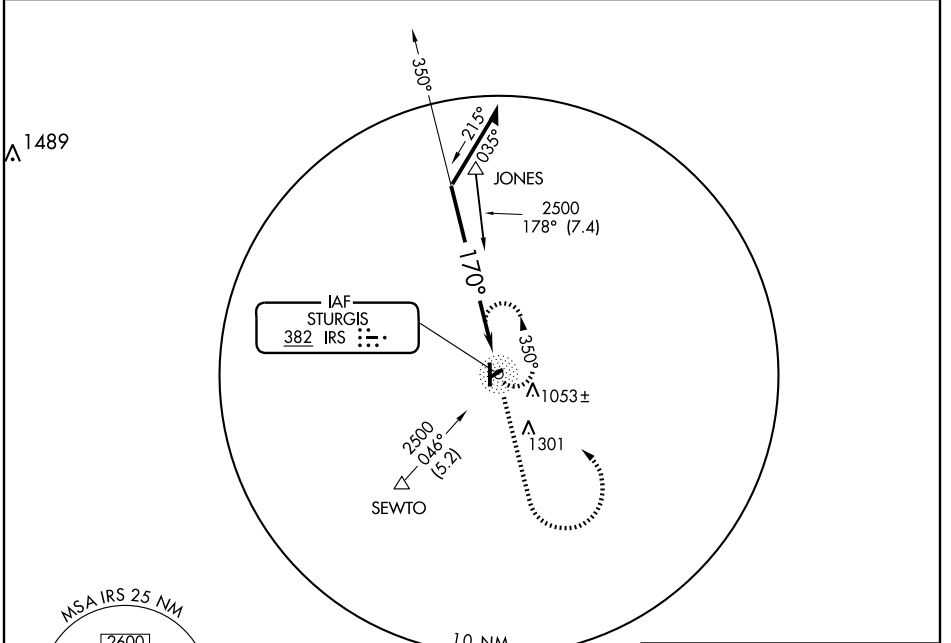
NDB RWY 18

STURGIS/KIRSCH MUNI (IRS)

NDB IRS 382	APP CRS 170°	Rwy Idg TDZE Apt Elev	5200 915 925
-----------------------	------------------------	-----------------------------	---

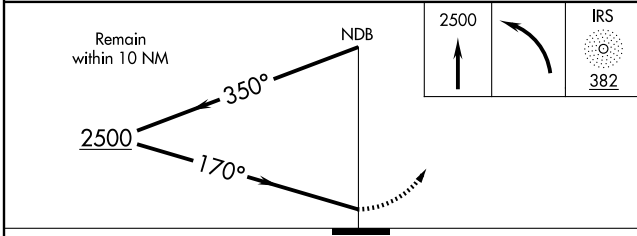
<p>▼ ▲ NA</p>	<p>MISSED APPROACH: Climb to 2500 then left turn direct IRS NDB and hold.</p>		
-------------------	---	--	--

AWOS-3 121.325	KALAMAZOO APP CON * 121.2 340.9	CLNC DEL 133.55	UNICOM 123.05 (CTAF) 1
--------------------------	---	---------------------------	---



EC-1, 22 OCT 2009 to 19 NOV 2009

EC-1, 22 OCT 2009 to 19 NOV 2009



CATEGORY	A	B	C	D
S-18	1500-1	585 (600-1)	1500-1½ 585 (600-1½)	1500-1¾ 585 (600-1¾)
CIRCLING	1500-1	575 (600-1)	1500-1½ 575 (600-1½)	1620-2¼ 695 (700-2¼)

STURGIS, MICHIGAN
Amdt 5B 08269

41°49'N - 85°26'W

STURGIS/KIRSCH MUNI (IRS)
NDB RWY 18

REIL Rwy 18, 24 and 36 **1**
MIRL Rwy 6-24 and 18-36 **1**