

# RNAV (GPS) RWY 2

ROCK HILL/YORK COUNTY/BRYANT FIELD (UZA)

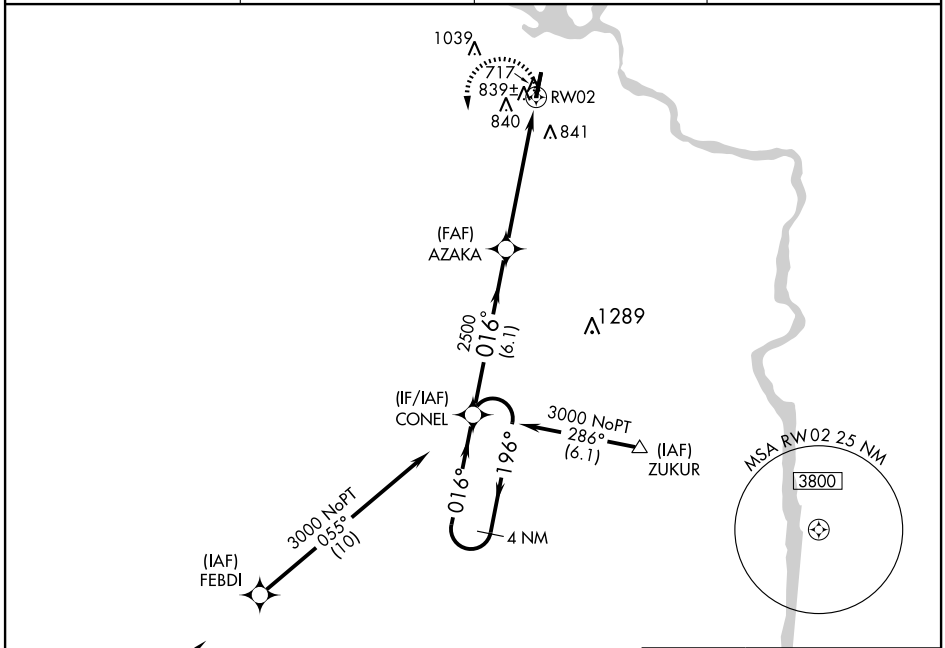
APP CRS <b>016°</b>	Rwy Idg <b>5500</b>
	TDZE <b>667</b>
	Apt Elev <b>667</b>

**▼** For inoperative MALSR, increase LNAV Cats A and B visibility to 1 mile. When local altimeter setting not received, use Charlotte, NC altimeter setting and increase all MDAs 60 feet. DME/DME RNP-0.3 NA.



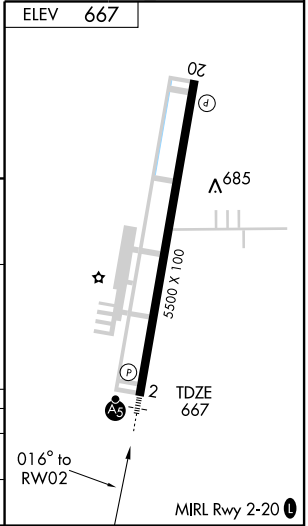
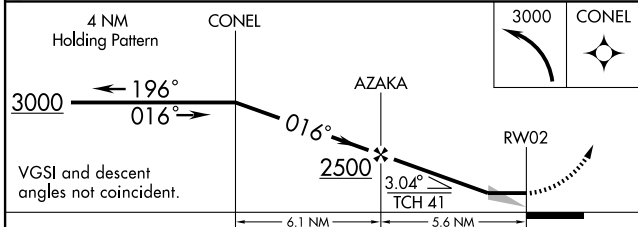
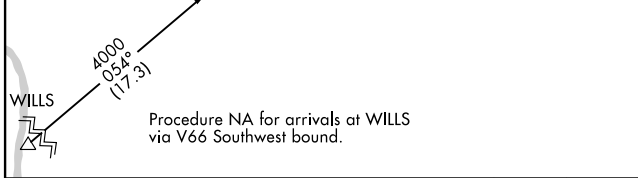
**MISSED APPROACH:** Climbing left turn to 3000 direct CONEL and hold.

ASOS <b>120.775</b>	CHARLOTTE APP CON <b>120.05 307.8</b>	CLNC DEL <b>126.85</b>	UNICOM <b>123.05 (CTAF) 0</b>
------------------------	--	---------------------------	----------------------------------



SE-2, 22 OCT 2009 to 19 NOV 2009

SE-2, 22 OCT 2009 to 19 NOV 2009



CATEGORY	A	B	C	D
LNAV MDA	1100-3/4 433 (500-3/4)		1100-1 433 (500-1)	
CIRCLING	1140-1 473 (500-1)	1200-1 1/2 533 (600-1 1/2)		1220-2 553 (600-2)

# RNAV (GPS) RWY 2