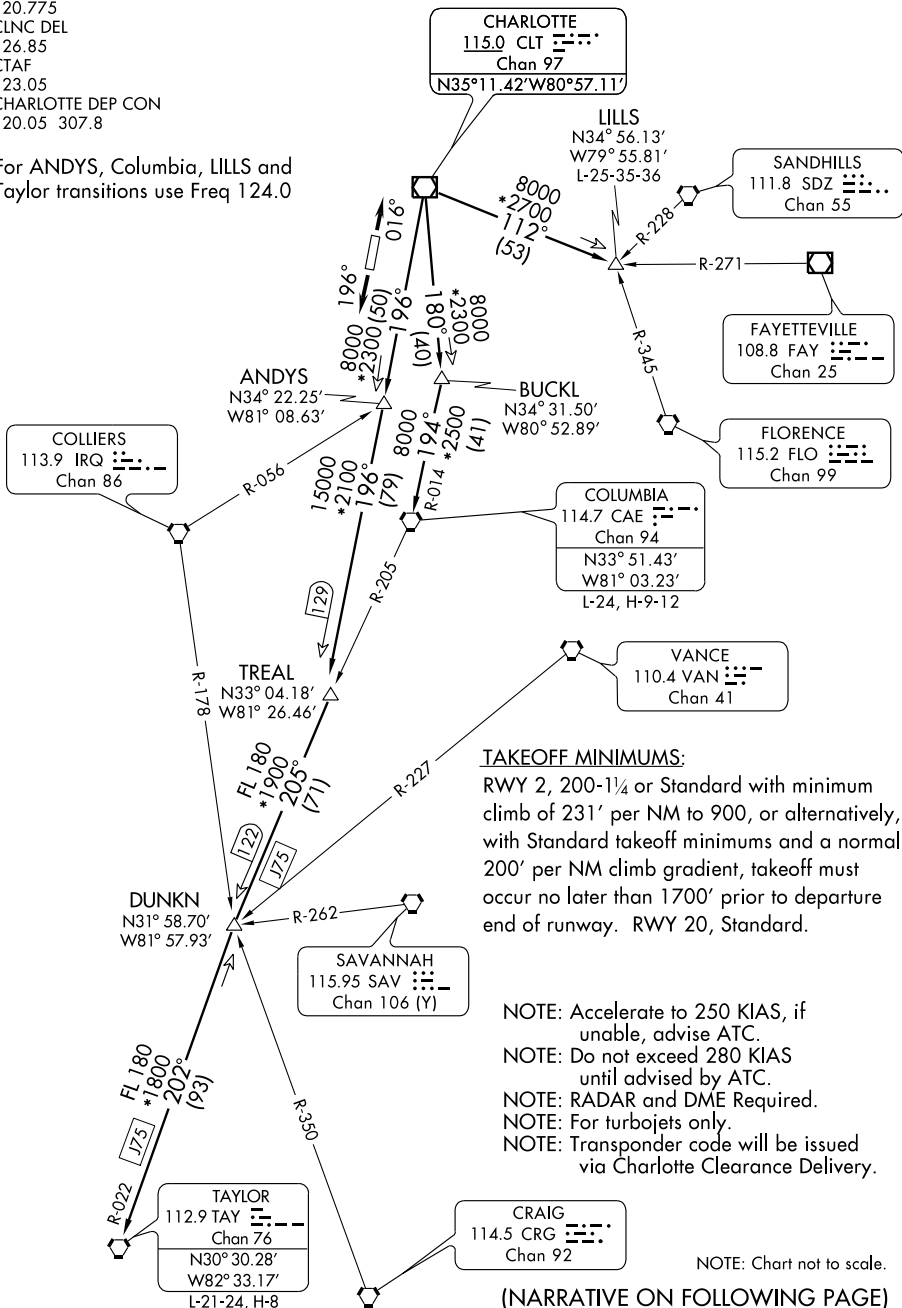


PANTHER EIGHT DEPARTURE

ROCK HILL/YORK COUNTY/BRYANT FIELD (UZA)
SL-5361 (FAA)
ROCK HILL, SOUTH CAROLINA

ASOS
120.775
CLNC DEL
126.85
CTAF
123.05
CHARLOTTE DEP CON
120.05 307.8

For ANDYS, Columbia, LILLS and Taylor transitions use Freq 124.0



SE-2, 22 OCT 2009 to 19 NOV 2009

SE-2, 22 OCT 2009 to 19 NOV 2009

(NARRATIVE ON FOLLOWING PAGE)

PANTHER EIGHT DEPARTURE

ROCK HILL, SOUTH CAROLINA
ROCK HILL/YORK COUNTY/BRYANT FIELD (UZA)