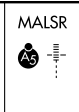


LOC I- <u>UZA</u> <b>108.5</b>	APP CRS <b>016°</b>	Rwy Idg <b>5500</b>
		TDZE <b>667</b>
		Apt Elev <b>667</b>

# ILS or LOC RWY 2

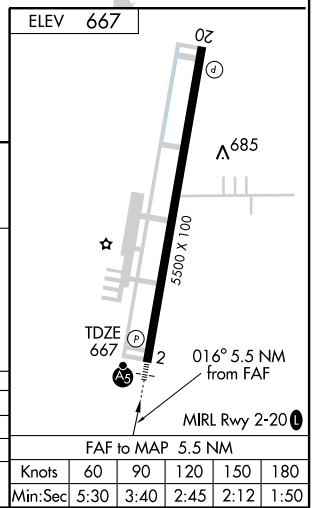
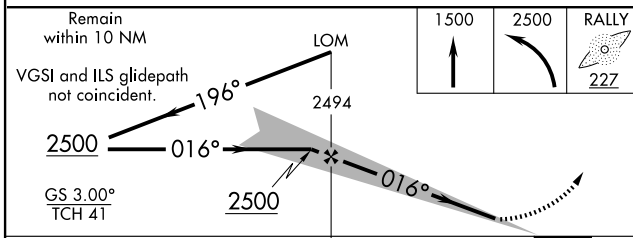
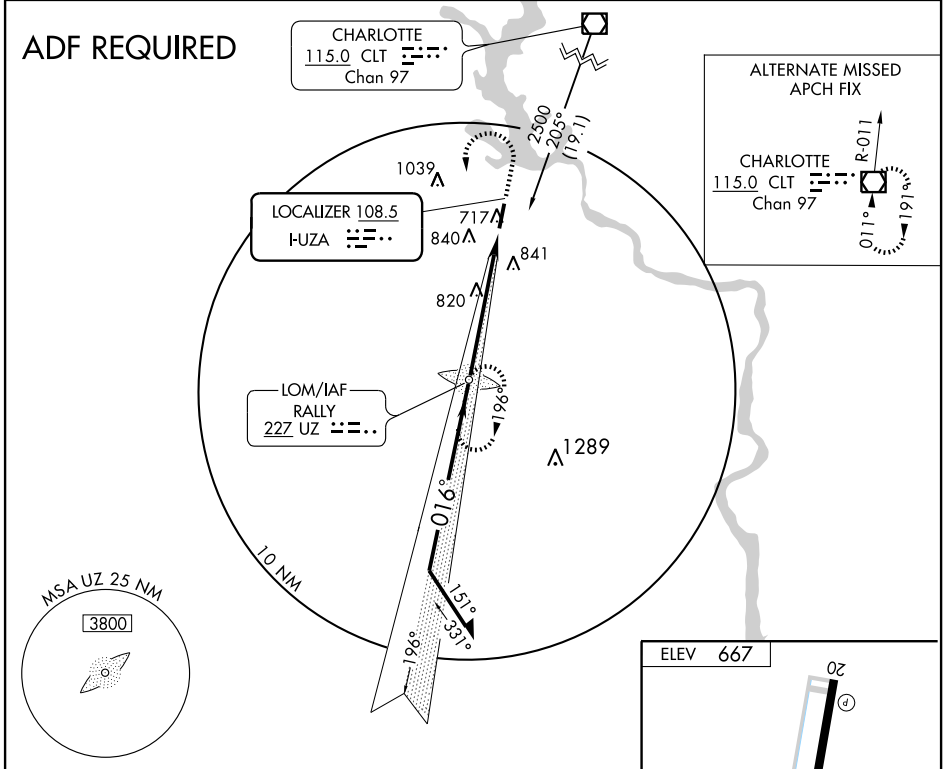
ROCK HILL/YORK COUNTY/BRYANT FIELD (UZA)

**NA** When local altimeter setting not received, use Charlotte, NC altimeter setting and increase DA to 913 feet and all MDA's 60 feet, increase S-LOC 2 Cat D visibility ¼ mile.



**MISSED APPROACH:** Climb to 1500 then climbing left turn to 2500 direct RALLY LOM and hold.

ASOS <b>120.775</b>	CHARLOTTE APP CON <b>120.05 307.8</b>	CLNC DEL <b>126.85</b>	UNICOM <b>123.05 (CTAF)</b>
------------------------	--	---------------------------	--------------------------------



CATEGORY	A	B	C	D
S- ILS 2	867-½ 200 (200-½)			
S- LOC 2	1080-½	413 (500-½)	1080-¾	413 (500-¾)
CIRCLING	1140-1	473 (500-1)	1200-1½	1220-2
			533 (600-1½)	553 (600-2)

FAF to MAP 5.5 NM					
Knots	60	90	120	150	180
Min:Sec	5:30	3:40	2:45	2:12	1:50

SE-2, 22 OCT 2009 to 19 NOV 2009

SE-2, 22 OCT 2009 to 19 NOV 2009