

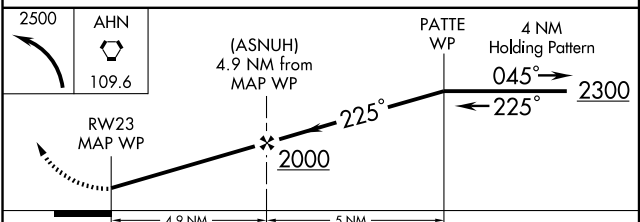
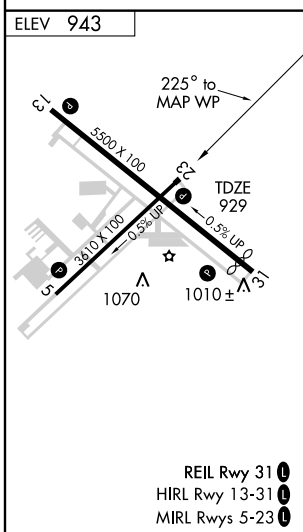
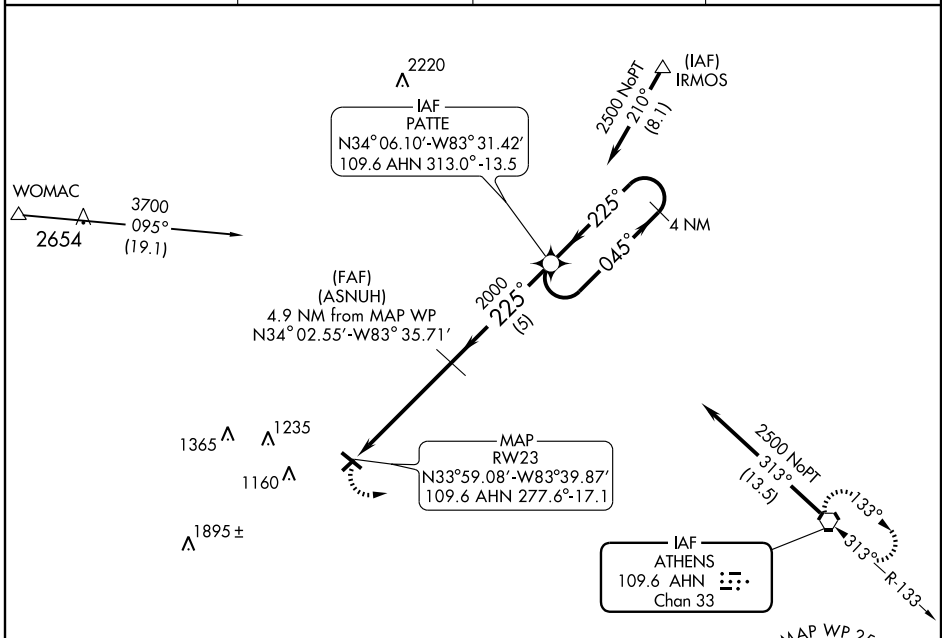
WINDER, GEORGIA

VORTAC AHN 109.6 Chan 33	APP CRS 225°	Rwy Idg TDZE Apt Elev	3610 929 943
---	------------------------	-----------------------------	---

VOR/DME RNAV or GPS RWY 23

AL-5360 (FAA) BARROW COUNTY AIRPORT (WDR)

<p>▼ Use Athens altimeter setting.</p> <p>▲ NA</p>		<p>MISSED APPROACH: Climbing left turn to 2500 direct AHN VORTAC and hold.</p>	
AWOS-3 118.575	ATLANTA APP CON ★ 132.475 291.1	GCO 121.725	UNICOM 123.0 (CTAF) 0



CATEGORY	A	B	C	D
S-23	1400-1	471 (500-1)	1400-1¼ 471 (500-1¼)	1400-1½ 471 (500-1½)
CIRCLING	1440-1 497 (500-1)	1500-1 557 (600-1)	1500-1½ 557 (600-1½)	1540-2 597 (600-2)

WINDER, GEORGIA
Orig-C 09295

33° 59' N-83° 40' W BARROW COUNTY AIRPORT (WDR)
VOR/DME RNAV or GPS RWY 23

SE-4, 22 OCT 2009 to 19 NOV 2009

SE-4, 22 OCT 2009 to 19 NOV 2009