

WINDER, GEORGIA

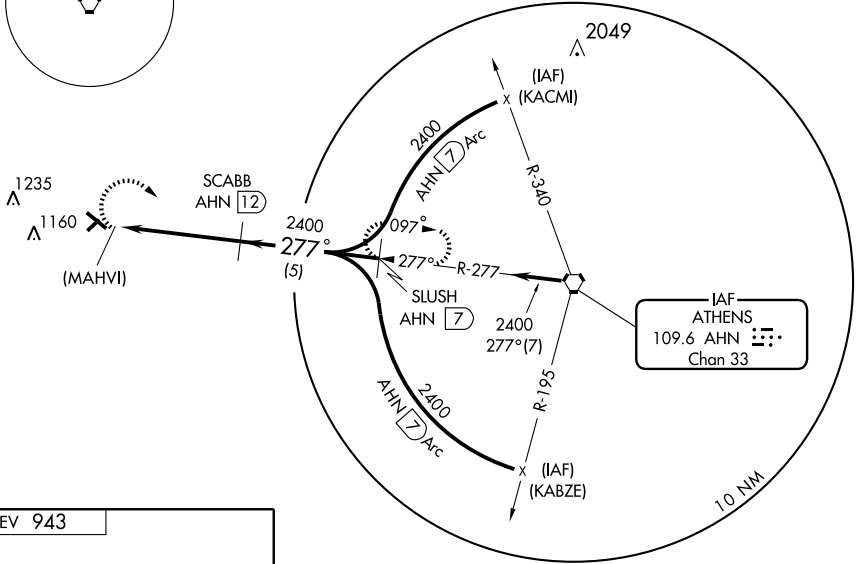
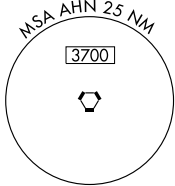
AL-5360 (FAA)

VORTAC AHN 109.6 Chan 33	APP CRS 277°	Rwy Idg TDZE Apt Elev	N/A N/A 943
--	------------------------	-----------------------------	--

VOR/DME or GPS-A

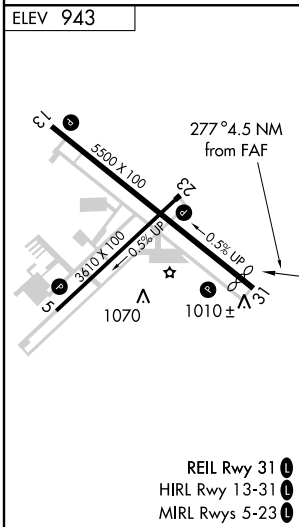
BARROW COUNTY AIRPORT (WDR)

NA Use Athens altimeter setting.		MISSED APPROACH: Climbing right turn to 2400 via AHN R-277 to SLUSH 7 DME and hold.	
AWOS-3 118.575	ATLANTA APP CON ★ 132.475 291.1	GCO 121.725	UNICOM 123.0 (CTAF) 1



SE-4, 22 OCT 2009 to 19 NOV 2009

SE-4, 22 OCT 2009 to 19 NOV 2009



	2400 SLUSH AHN 7 AHN R-277 109.6	SCABB AHN 12	SLUSH AHN 7 Procedure Turn NA	
	(MAHVI) AHN 16.5 2400	2400	2400	
	4.5 NM	5 NM		
CATEGORY	A	B	C	D
CIRCLING	1440-1 497 (500-1)	1500-1 557 (600-1)	1500-1½ 557 (600-1½)	1520-2 577 (600-2)

WINDER, GEORGIA
Amdt 9C 09295

33° 59' N-83° 40' W

BARROW COUNTY AIRPORT (WDR)
VOR/DME or GPS-A