

WINDER, GEORGIA

AL-5360 (FAA)

RNAV (GPS) RWY 31

BARROW COUNTY AIRPORT (WDR)

WAAS CH 69305 W31A	APP CRS 312°	Rwy Idg TDZE Apt Elev	5160 920 943
--	------------------------	-----------------------------	---

Baro-VNAV NA when using Athens altimeter setting. If local altimeter setting not received, use Athens altimeter setting and increase all DAs/MDAs 60 feet.
 For uncompensated Baro-VNAV systems, LNAV/VNAV NA below -16° C (4° F) or above 47° C (116° F). DME/DME RNP-0.3 NA.
 Visibility reduction by helicopters NA.

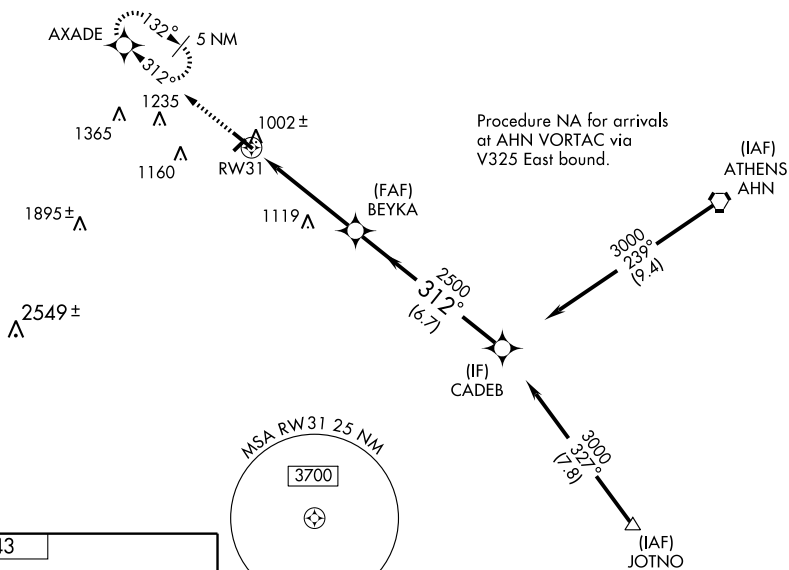
MISSED APPROACH: Climb to 2600 direct AXADE and hold.

AWOS-3
118.575

ATLANTA APP CON ★
132.475 291.1

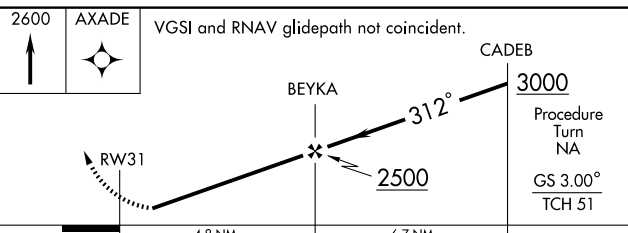
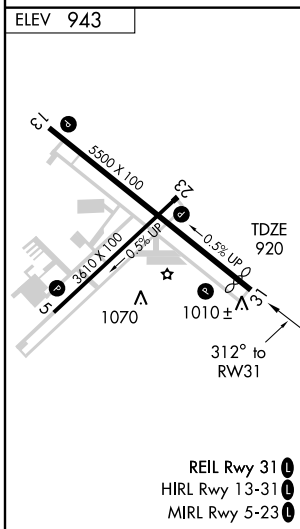
GCO
121.725

UNICOM
123.0 (CTAF) 0



SE-4, 22 OCT 2009 to 19 NOV 2009

SE-4, 22 OCT 2009 to 19 NOV 2009



CATEGORY	A	B	C	D
LPV DA	1214-1		294 (300-1)	
LNAV/VNAV DA	1272-1½		352 (400-1½)	
LNAV MDA	1400-1	480 (500-1)	1400-1¼ 480 (500-1¼)	1400-1½ 480 (500-1½)
CIRCLING	1400-1 457 (500-1)	1500-1 557 (600-1)	1500-1½ 557 (600-1½)	1500-2 557 (600-2)

WINDER, GEORGIA
Orig 09295

33° 59' N-83° 40' W

BARROW COUNTY AIRPORT (WDR)

RNAV (GPS) RWY 31