

WINDER, GEORGIA

AL-5360 (FAA)

# RNAV (GPS) RWY 13

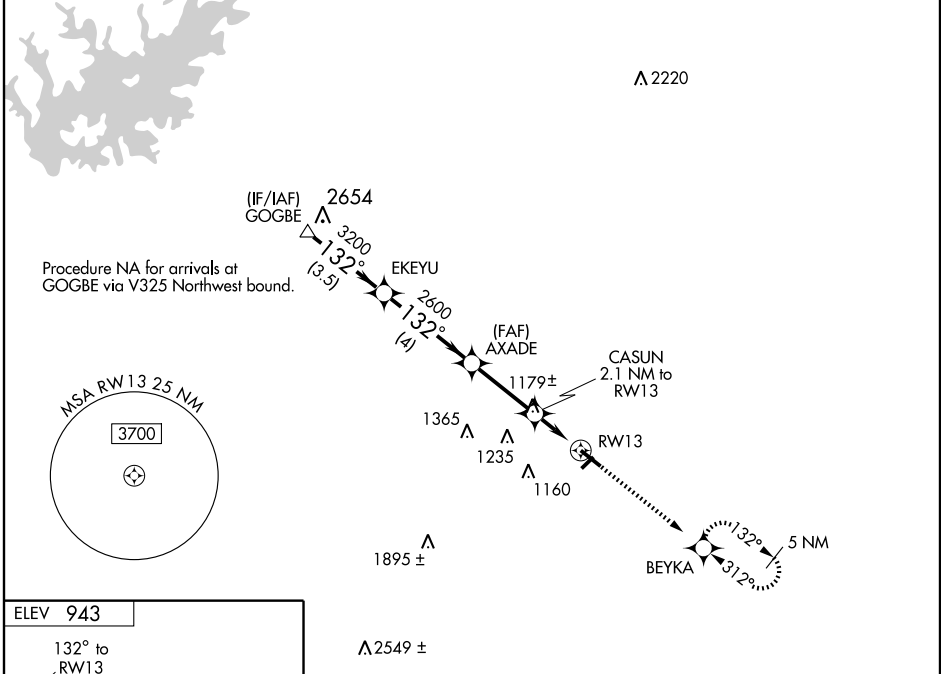
BARROW COUNTY AIRPORT (WDR)

WAAS CH <b>90305</b> <b>W13A</b>	APP CRS <b>132°</b>	Rwy Idg TDZE Apt Elev	<b>5500</b> <b>935</b> <b>943</b>
--	------------------------	-----------------------------	---

Baro-VNAV NA when using Athens altimeter setting. If local altimeter setting not received, use Athens altimeter setting and increase all DAs/MDAs 60 feet.  
 For uncompensated Baro-VNAV systems, LNAV/VNAV NA below -16° C (4° F) or above 47° C (116° F). DME/DME RNP-0.3 NA.  
 Visibility reduction by helicopters NA.

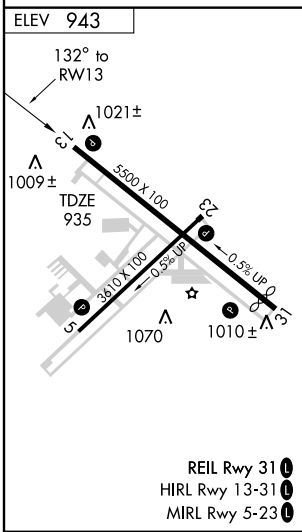
MISSED APPROACH: Climb to 2500 direct BEYKA and hold.

AWOS-3 <b>118.575</b>	ATLANTA APP CON ★ <b>132.475 291.1</b>	GCO <b>121.725</b>	UNICOM <b>123.0(CTAF) 0</b>
--------------------------	---	-----------------------	--------------------------------



SE-4, 22 OCT 2009 to 19 NOV 2009

SE-4, 22 OCT 2009 to 19 NOV 2009



GOGBE		VGSi and RNAV glidepath not coincident.		2500	BEYKA
3700		EKEYU	AXADE	CASUN	*LNNAV Only
Procedure Turn NA		3200	132°	2.1 NM to RWY 13	RWY 13
GS 3.00°		2600		*1660	
TCH 55		3.5 NM	4 NM	2.9 NM	2.1 NM
CATEGORY	A	B	C	D	
LPV DA	1252-1		317 (400-1)		
LNNAV/VNAV DA	1418-1¾		483 (500-1¾)		
LNNAV MDA	1300-1		365 (400-1)		1300-1¼ 365 (400-1¼)
CIRCLING	1400-1 457 (500-1)	1500-1 557 (600-1)	1500-1½ 557 (600-1½)	1500-2 557 (600-2)	

WINDER, GEORGIA  
Orig 90295

33° 59' N-83° 40' W

# BARROW COUNTY AIRPORT (WDR)

## RNAV (GPS) RWY 13