

WINDER, GEORGIA

AL-5360 (FAA)

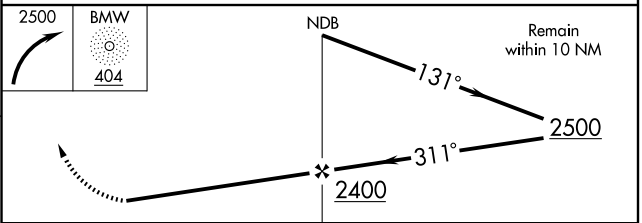
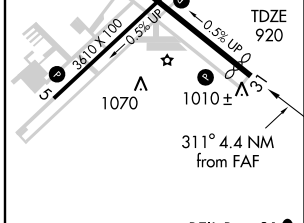
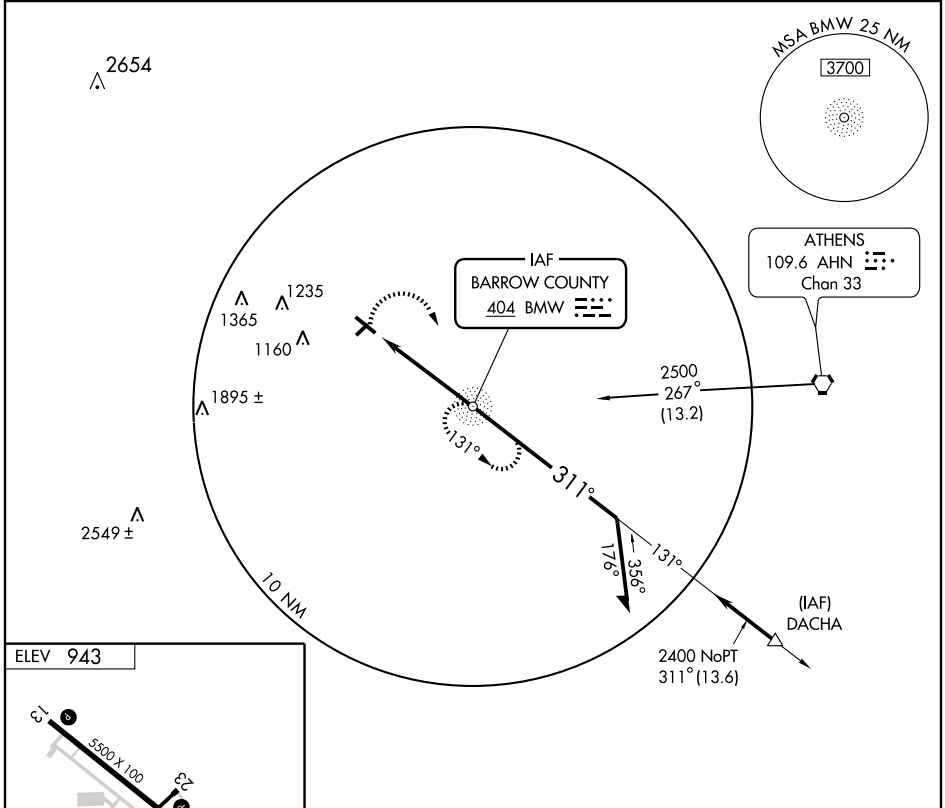
NDB RWY 31

BARROW COUNTY AIRPORT (WDR)

NDB BMW 404	APP CRS 311°	Rwy Idg TDZE Apt Elev	5160 920 943
------------------------------	------------------------	-----------------------------	---

<p>▼ ▲ NA</p> <p>Use Athens altimeter setting.</p>	<p>MISSED APPROACH: Climbing right turn to 2500 direct BMW NDB and hold.</p>
--	--

<p>AWOS-3 118.575</p>	<p>ATLANTA APP CON ★ 132.475 291.1</p>	<p>GCO 121.725</p>	<p>UNICOM 123.0(CTAF)</p>
----------------------------------	---	-------------------------------	--------------------------------------



FAF to MAP 4.4 NM		A	B	C	D
CATEGORY	S-31	1480-1	560 (600-1)	1480-1½ 560 (600-1½)	1480-1¾ 560 (600-1¾)
CIRCLING		1480-1 537 (600-1)	1500-1 557 (600-1)	1500-1½ 557 (600-1½)	1520-2 577 (600-2)

WINDER, GEORGIA
Amdt 8C 09295

BARROW COUNTY AIRPORT (WDR)

33° 59' N-83° 40' W

NDB RWY 31

SE-4, 22 OCT 2009 to 19 NOV 2009

SE-4, 22 OCT 2009 to 19 NOV 2009