

RNAV (GPS) RWY 18

LAWRENCEVILLE/BRUNSWICK MUNI (LVL)

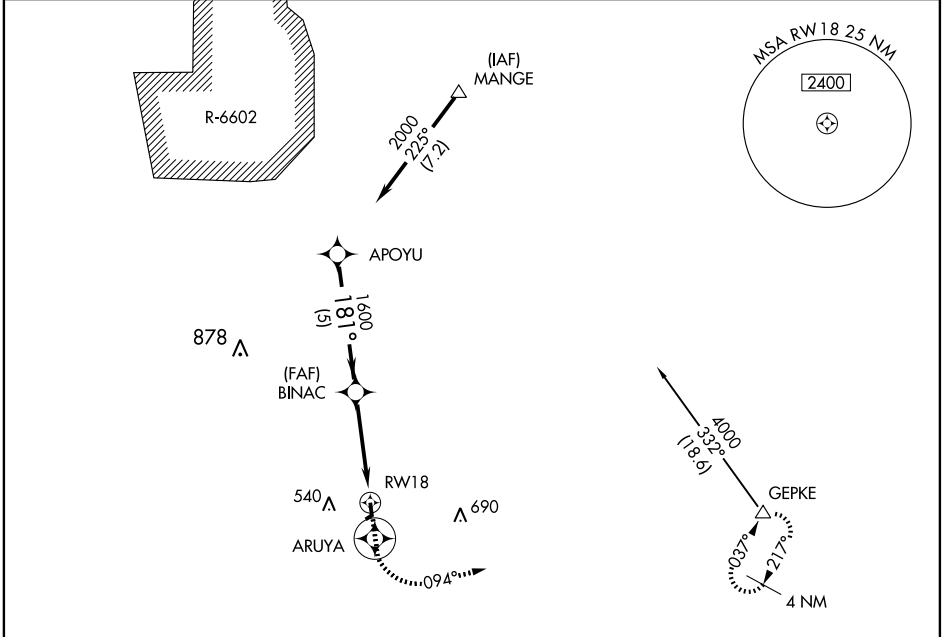
APP CRS	Rwy Idg	3020
181°	TDZE	329
	Apt Elev	329

NA Use Mecklenburg/Brunswick altimeter setting. DME/DME RNP-0.3 NA. GPS or RNP-0.3 required. Circling NA to Rwy 6/24.

MISSED APPROACH: Climb to 4000 direct ARUYA WP and left turn via 094° track to GEPKE WP and hold.

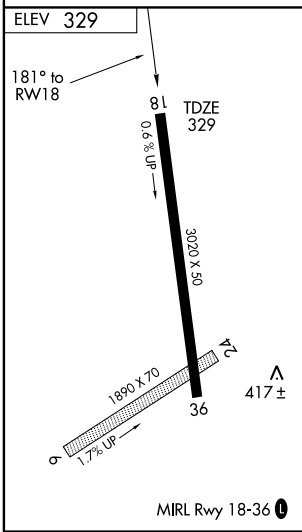
WASHINGTON APP CON **118.75 377.1**

UNICOM **122.8 (CTAF) 1**



NE-3, 22 OCT 2009 to 19 NOV 2009

NE-3, 22 OCT 2009 to 19 NOV 2009



	APOYU	4000	ARUYA	GEPKE
		↑	⊗	↪
				△
	2000	181°	1600	2.90° TCH 40
Procedure Turn NA				TRK 094°
	5 NM		4 NM	
CATEGORY	A	B	C	D
LNAV MDA	840-1	511 (600-1)	NA	
CIRCLING	940-1	611 (700-1)	NA	

RNAV (GPS) RWY 18