

VINELAND, NEW JERSEY

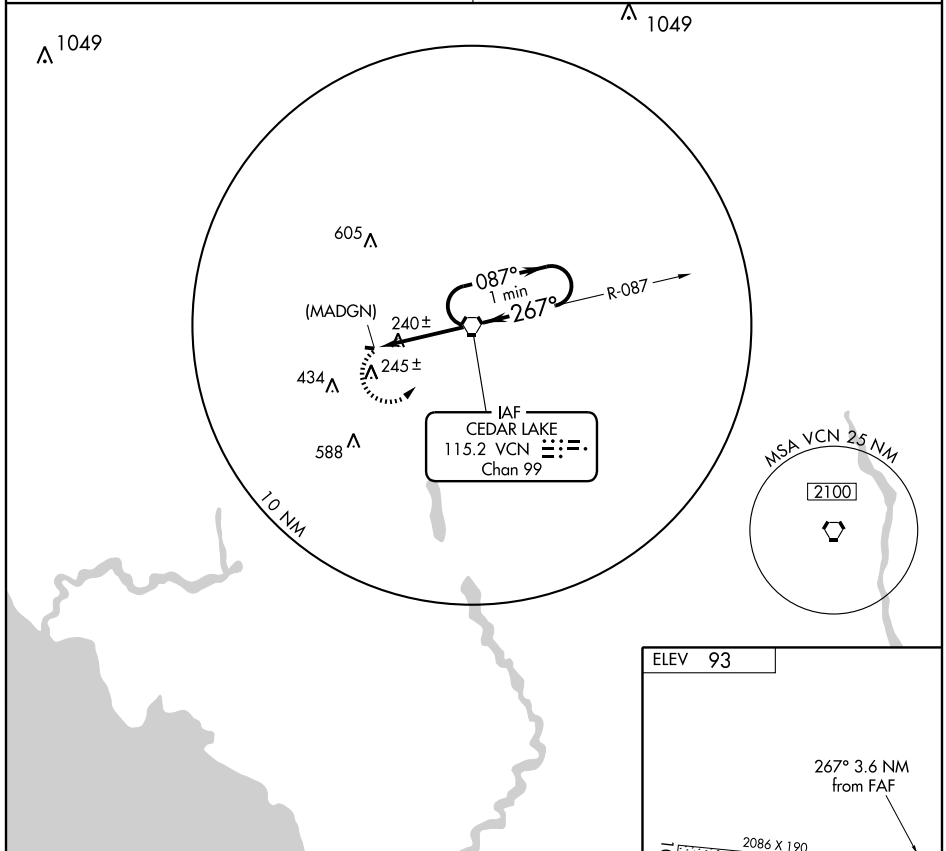
AL-5357 (FAA)

VORTAC VCN 115.2 Chan 99	APP CRS 267°	Rwy Idg TDZE Apt Elev	N/A N/A 93
--	------------------------	-----------------------------	---------------------------------------

VOR or GPS-B
VINELAND/KROELINGER (29N)

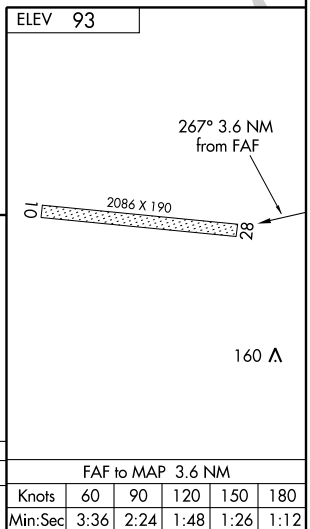
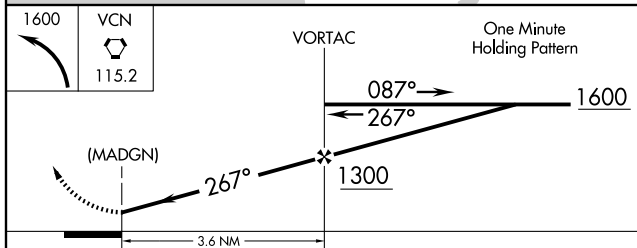
<p>▼ Use Millville Muni altimeter setting. ▲ NA Procedure not authorized at night.</p>	<p>MISSED APPROACH: Climbing left turn to 1600 direct VCN VORTAC and hold.</p>
--	--

<p>ATLANTIC CITY APP CON 124.6 327.125</p>	<p>CTAF 122.9</p>
---	------------------------------



NE-2, 22 OCT 2009 to 19 NOV 2009

NE-2, 22 OCT 2009 to 19 NOV 2009



CATEGORY	A	B	C	D
CIRCLING	620-1 527 (600-1)		NA	

FAF to MAP 3.6 NM					
Knots	60	90	120	150	180
Min:Sec	3:36	2:24	1:48	1:26	1:12

VINELAND, NEW JERSEY
Orig 08045

39°31'N - 75°03'W

VINELAND/KROELINGER (29N)
VOR or GPS-B