

# RNAV (GPS) RWY 4

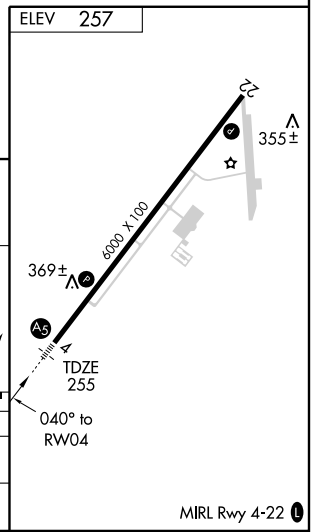
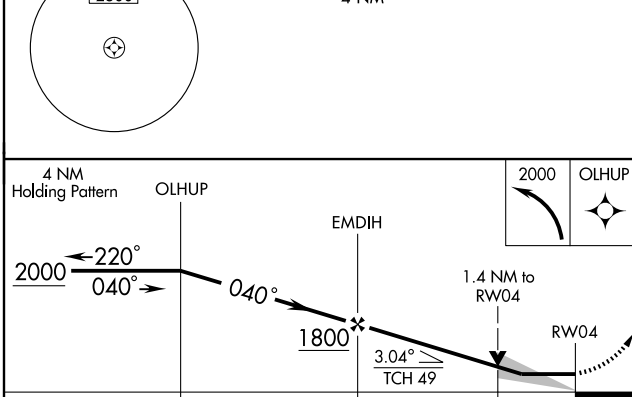
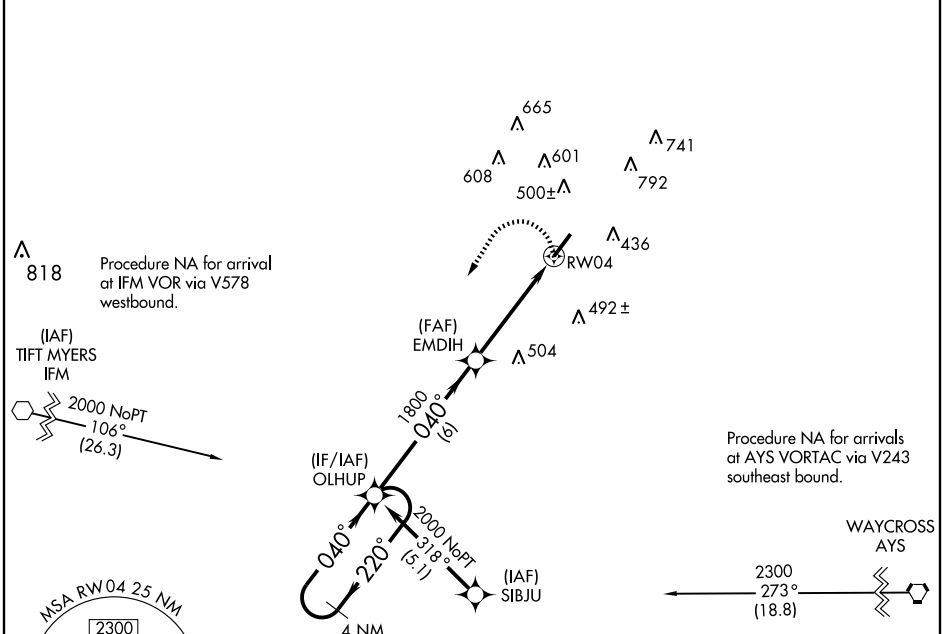
DOUGLAS MUNI (DQH)

APP CRS	Rwy Idg	<b>6000</b>
<b>040°</b>	TDZE	<b>255</b>
	Apt Elev	<b>257</b>

**⚠** DME/DME RNP-0.3 NA. When local altimeter setting not received, use Alma altimeter setting and increase all MDAS 60 feet, and increase LNAV Cats C and D and circling Cat. C visibility ¼ mile. VDP NA when using Alma altimeter setting.

**MALSR** MISSED APPROACH: Climbing left turn to 2000 direct OLHUP and hold.

AWOS-3 <b>119.075</b>	JACKSONVILLE CENTER <b>132.3 290.4</b>	GCO <b>121.725</b>	UNICOM <b>122.8 (CTAF)</b>
--------------------------	---	-----------------------	-------------------------------



CATEGORY	A	B	C	D
LNAV MDA	740-½ 485 (500-½)	740-¾ 485 (500-¾)	740-1 485 (500-1)	740-1 485 (500-1)
CIRCLING	740-1 483 (500-1)	800-1½ 543 (600-1½)	820-2 563 (600-2)	

SE-4, 22 OCT 2009 to 19 NOV 2009

SE-4, 22 OCT 2009 to 19 NOV 2009