

ILS or LOC RWY 4

DOUGLAS MUNI (DQH)

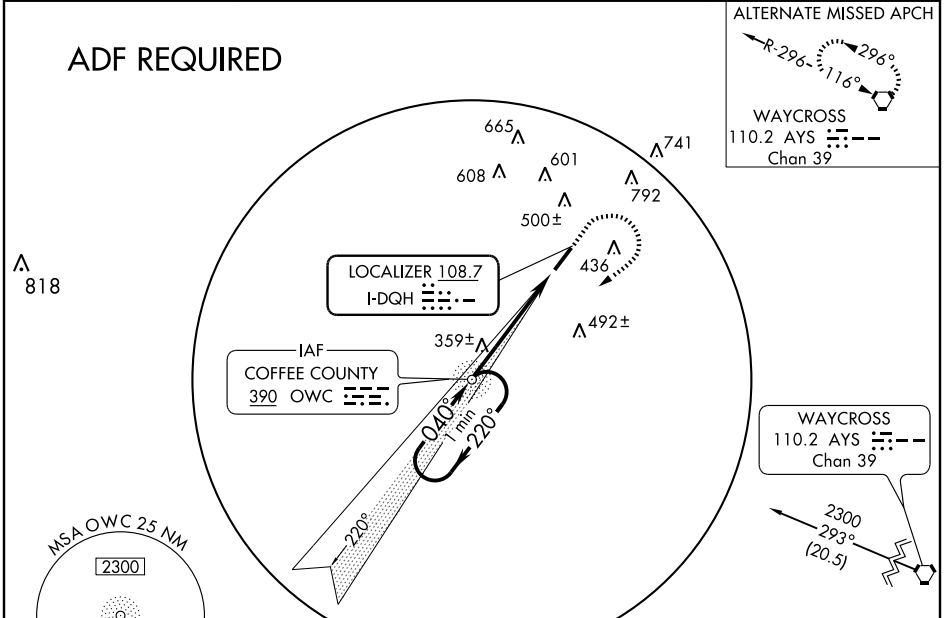
LOC I-DQH 108.7	APP CRS 040°	Rwy ldg 6000 TDZE 255 Apt Elev 257
---------------------------	------------------------	--

ADF required. When local altimeter setting not received, use Alma altimeter setting and increase all DA/MDAS 60 feet and increase S-LOC 4 and circling Cat. C visibility ¼ mile. For inoperative MALSR, when using Alma altimeter setting increase S-ILS 4 all Cats visibility 1 mile.

MALSR
AS

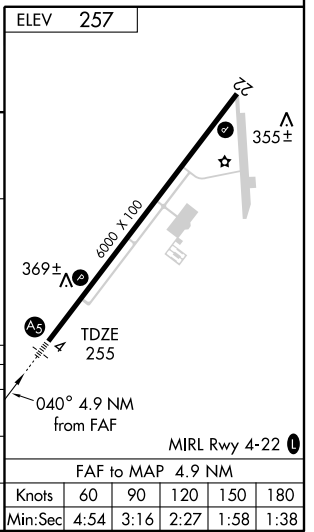
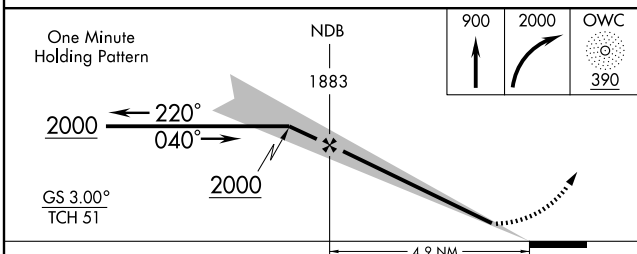
MISSED APPROACH: Climb to 900 then climbing right turn to 2000 direct OWC NDB and hold.

AWOS-3 119.075	JACKSONVILLE CENTER 132.3 290.4	GCO 121.725	UNICOM 122.8 (CTAF)
--------------------------	---	-----------------------	-------------------------------



SE-4, 22 OCT 2009 to 19 NOV 2009

SE-4, 22 OCT 2009 to 19 NOV 2009



CATEGORY	A	B	C	D
S-ILS 4	455-½		200 (200-½)	
S-LOC 4	620-½	365 (400-½)		620-¾ 365 (400-¾)
CIRCLING	720-1	463 (500-1)	800-1½ 543 (600-1½)	820-2 563 (600-2)

ELEV	257				
MIRL Rwy 4-22	MIRL Rwy 4-22				
FAF to MAP	4.9 NM				
Knots	60	90	120	150	180
Min:Sec	4:54	3:16	2:27	1:58	1:38