

WAAS Ch 40106 W05A	APP CRS 052°	Rwy Idg TDZE 310 Apt Elev 310	5006
--	------------------------	---	-------------

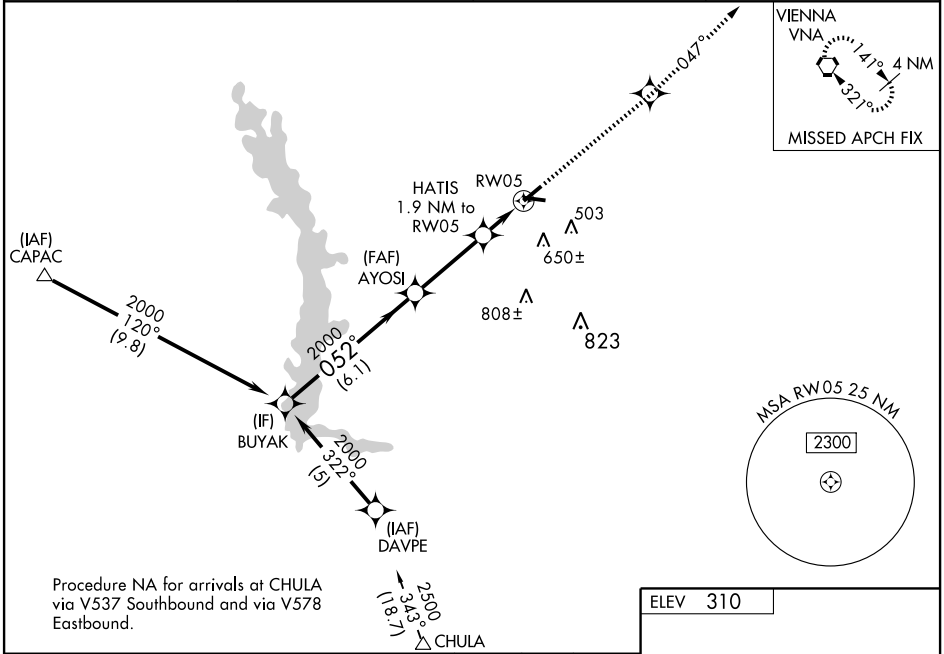
RNAV (GPS) RWY 5

CORDELE / CRISP COUNTY-CORDELE (CKF)

When local altimeter setting not received, use Albany altimeter setting and increase all DAs 96 feet, all MDAs 100 feet, and LPV all Cats visibility ½ mile, LNAV/VNAV all Cats and LNAV Cats C and D visibilities ¼ mile, Circling visibility Cat. C ¼ mile, Cat. D ½ mile. DME/DME RNP-0.3 NA. For uncompensated Baro-VNAV systems, LNAV/VNAV NA below -15°C (5°F) or above 48°C (118°F). Visibility reduction by helicopters NA. Baro-VNAV NA when using Albany altimeter setting. Straight-in minimums NA at night.

MISSED APPROACH: Climb to 2000 direct EBESE and via 047° track to VNA VORTAC and hold.

AWOS-3 119.325	JACKSONVILLE CENTER 125.75 226.8	GCO 121.725	UNICOM 123.050 (CTAF) 0
--------------------------	--	-----------------------	-----------------------------------



SE-4, 22 OCT 2009 to 19 NOV 2009

SE-4, 22 OCT 2009 to 19 NOV 2009

Procedure Turn NA	BUYAK	AYOSI	HATIS	RW05	VNA
	2000	052°	2000	1.9 NM to RW05	047° TRK
GS 3.00° TCH 45			*960		
	6.1 NM	3.2 NM	1.9 NM		
CATEGORY	A	B	C	D	
LPV DA	623-1		313 (400-1)		
LNAV/VNAV DA	661-1¼		351 (400-1¼)		
LNAV MDA	660-1		350 (400-1)		660-1¼ 350 (400-1¼)
CIRCLING	760-1 450 (500-1)	820-1 510 (600-1)	820-1½ 510 (600-1½)	960-2 650 (700-1)	

