

CORDELE, GEORGIA

AL-5355 (FAA)

WAAS Ch 99305 W28A	APP CRS 280°	Rwy Idg TDZE Apt Elev	5001 309 310
--	------------------------	-----------------------------	---

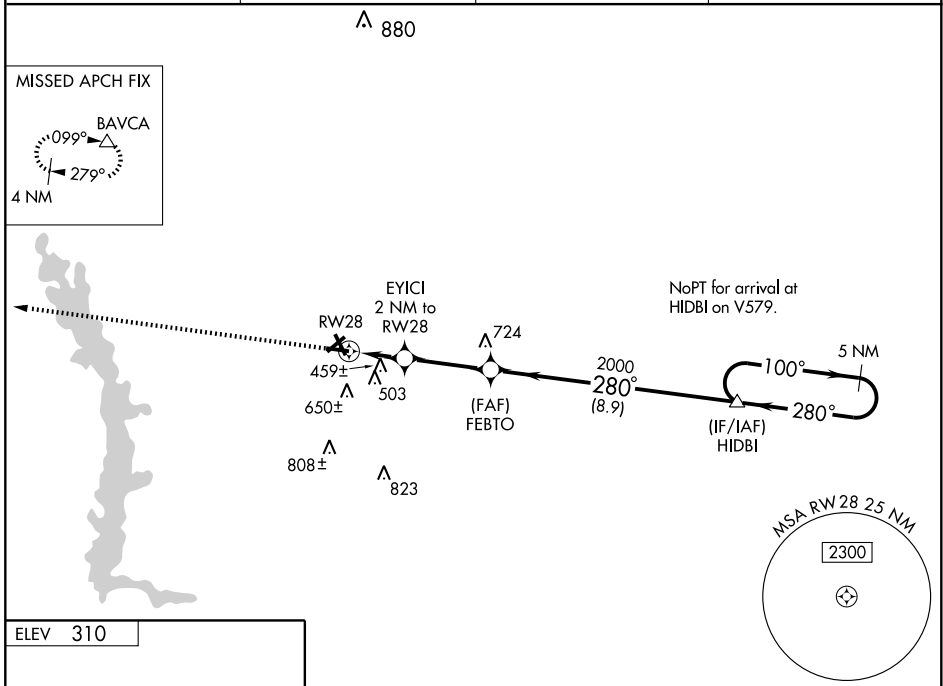
RNAV (GPS) RWY 28

CORDELE / CRISP COUNTY-CORDELE (CKF)

▼ If local altimeter setting not received, use Albany altimeter setting and increase all DAs/MDAs 100 feet. For uncompensated Baro-VNAV systems, LNAV/VNAV NA below -15°C (5°F) or above 48°C (118°F). Visibility reduction by helicopters NA. DME/DME RNP-0.3 NA. Baro-VNAV NA when using Albany altimeter setting.

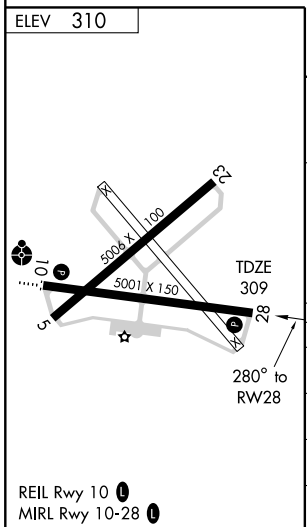
MISSED APPROACH: Climb to 2000 direct BAVCA and hold.

AWOS-3 119.325	JACKSONVILLE CENTER 125.75 226.8	GCO 121.725	UNICOM 123.050 (CTAF) 0
--------------------------	--	-----------------------	--

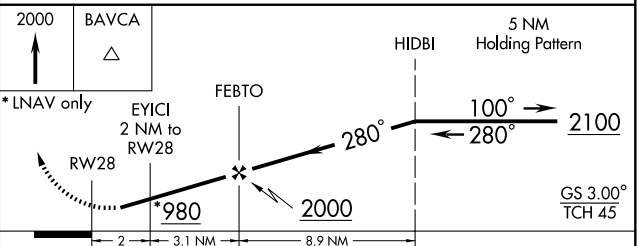


SE-4, 22 OCT 2009 to 19 NOV 2009

SE-4, 22 OCT 2009 to 19 NOV 2009



REIL Rwy 10 **0**
MIRL Rwy 10-28 **0**



CATEGORY	A	B	C	D
LPV DA	679-1¼ 370 (400-1¼)			
LNAV/VNAV DA	851-2 542 (600-2)			
LNAV MDA	720-1	411 (500-1)	720-1¼	411 (500-1¼)
CIRCLING	760-1 450 (500-1)	820-1 510 (600-1)	820-1½ 510 (600-1½)	960-2 650 (700-1)

CORDELE, GEORGIA
Orig 07242

RNAV (GPS) RWY 28

31°59'N - 83°46'W