

CORDELE, GEORGIA


AL-5355 (FAA)

NDB RWY 10

CORDELE/CRISP COUNTY-CORDELE (CKF)

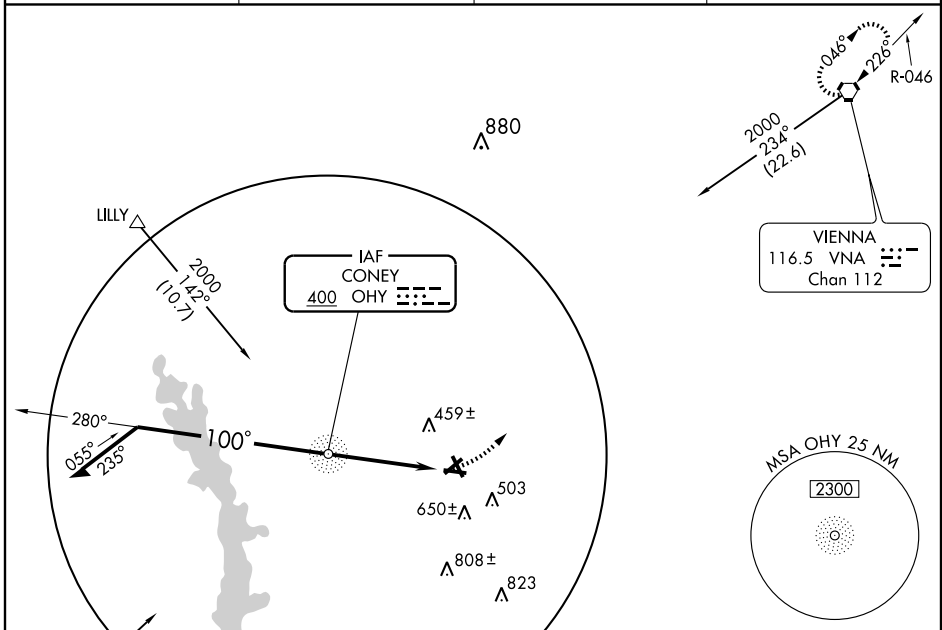
NDB OHY 400	APP CRS 100°	Rwy Idg 5001
		TDZE 308
		Apt Elev 310

⚠ When local altimeter setting not received, use Albany altimeter setting and increase all MDAs 100 feet, and S-10 Cats C and D visibility ½ mile, circling Cats C and D visibility ½ mile. Visibility reduction by helicopters NA. Inoperative table does not apply.

ODALS 

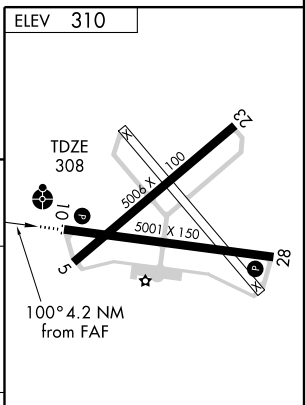
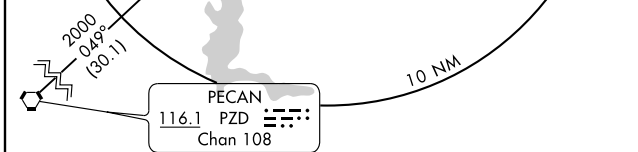
MISSED APPROACH: Climbing left turn to 2000 direct VNA VORTAC and hold.

AWOS-3 119.325	JACKSONVILLE CENTER 125.75 226.8	GCO 121.725	UNICOM 123.050 (CTAF) 0
--------------------------	--	-----------------------	-----------------------------------



SE-4, 22 OCT 2009 to 19 NOV 2009

SE-4, 22 OCT 2009 to 19 NOV 2009



CATEGORY	A		B		C		D	
	760-1		452 (500-1)		760-1¼		760-1½	
S-10	760-1		452 (500-1)		452 (500-1¼)		452 (500-1½)	
CIRCLING	760-1		820-1		820-1½		960-2	
	450 (500-1)		510 (600-1)		510 (600-1½)		650 (700-2)	

REIL Rwy 10 0				
MIRL Rwy 10-28 0				
FAF to MAP 4.2 NM				
Knots	60	90	120	150 180
Min:Sec	4:12	2:48	2:06	1:41 1:24

CORDELE, GEORGIA

Amdt 5 07354

CORDELE/CRISP COUNTY-CORDELE (CKF)

31° 59'N - 83° 46'W

NDB RWY 10