

# LOC RWY 10

CORDELE/CRISP COUNTY-CORDELE (CKF)

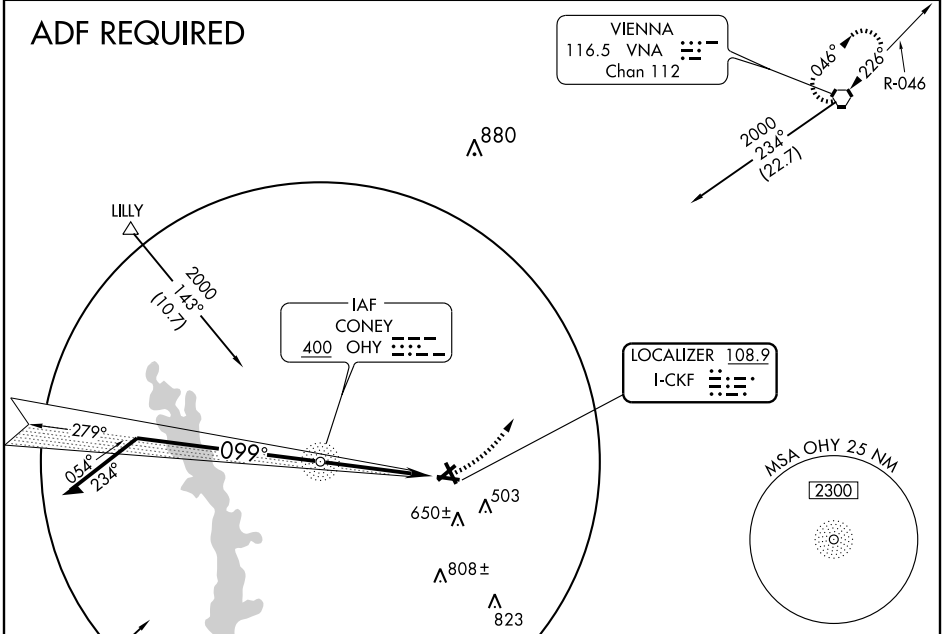
LOC I-CKF <b>108.9</b>	APP CRS <b>099°</b>	Rwy Idg <b>5001</b>
		TDZE <b>305</b>
		Apt Elev <b>310</b>

**NA**

ODALS

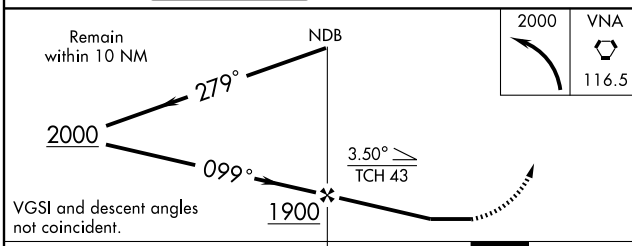
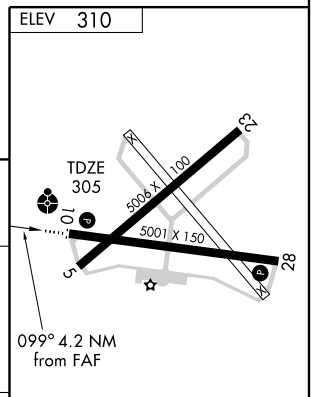
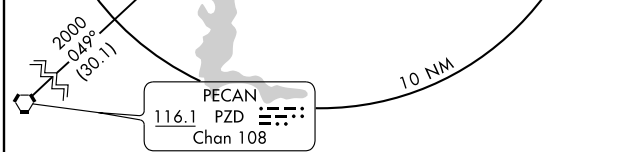
MISSED APPROACH: Climbing left turn to 2000 direct VNA VORTAC and hold.

AWOS-3 <b>119.325</b>	JACKSONVILLE CENTER <b>125.75 226.8</b>	GCO <b>121.725</b>	UNICOM <b>123.050 (CTAF)</b>
--------------------------	--	-----------------------	---------------------------------



SE-4, 22 OCT 2009 to 19 NOV 2009

SE-4, 22 OCT 2009 to 19 NOV 2009



CATEGORY	A	B	C	D
S-10	680-1 375 (400-1)			680-1½ 375 (400-1½)
CIRCLING	820-1 510 (600-1)		960-1¼ 650 (700-1¼)	960-2 650 (700-2)

REIL Rwy 10		MIRL Rwy 10-28	
FAF to MAP 4.2 NM			
Knots	60	90	120 150 180
Min:Sec	4:12	2:48	2:06 1:41 1:24