

# RNAV (GPS) RWY 9

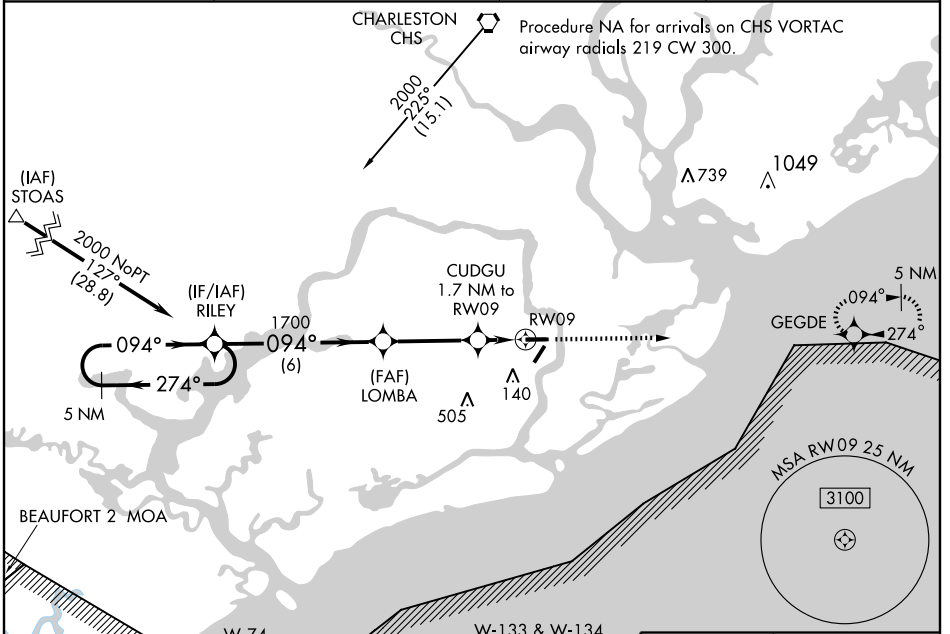
CHARLESTON EXECUTIVE (JZI)

WAAS CH <b>53305</b> <b>W09A</b>	APP CRS <b>094°</b>	Rwy Idg TDZE Apt Elev	<b>5000</b> <b>17</b> <b>17</b>
--	------------------------	-----------------------------	---------------------------------------

**⚠** If local altimeter setting not received, use Charleston AFB/Intl altimeter setting and increase all DAs 32 feet/MDAs 40 feet. DME/DME RNP-0.3 NA. VDP and Baro-VNAV NA when using Charleston AFB/Intl altimeter setting. For uncompensated Baro-VNAV systems, procedure NA below -15° C (5° F) or above 49° C (120° F).

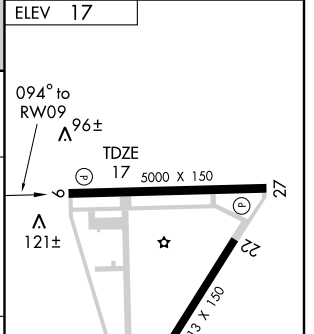
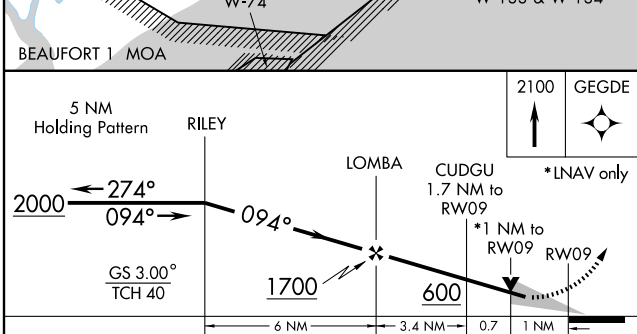
**⚠** MISSED APPROACH: Climb to 2100 direct GEGDE and hold.

AWOS-3 <b>123.775</b>	CHARLESTON APP CON <b>120.7 306.925</b>	CLNC DEL <b>127.15</b>	UNICOM <b>122.8</b> (CTAF) <b>⓪</b>
--------------------------	--	---------------------------	--



SE-2, 22 OCT 2009 to 19 NOV 2009

SE-2, 22 OCT 2009 to 19 NOV 2009



CATEGORY	A	B	C	D
LPV DA		306-1	289 (300-1)	
LNAV/VNAV DA		356-1¼	339 (400-1¼)	
LNAV MDA	360-1	343 (400-1)		360-1¼ 343 (400-1¼)
CIRCLING	400-1 383 (400-1)	480-1 463 (500-1)	480-1½ 463 (500-1½)	580-2 563 (600-2)

MIRL Rwy 4-22 **⓪**  
HIRL Rwy 9-27 **⓪**