

# ILS or LOC RWY 9

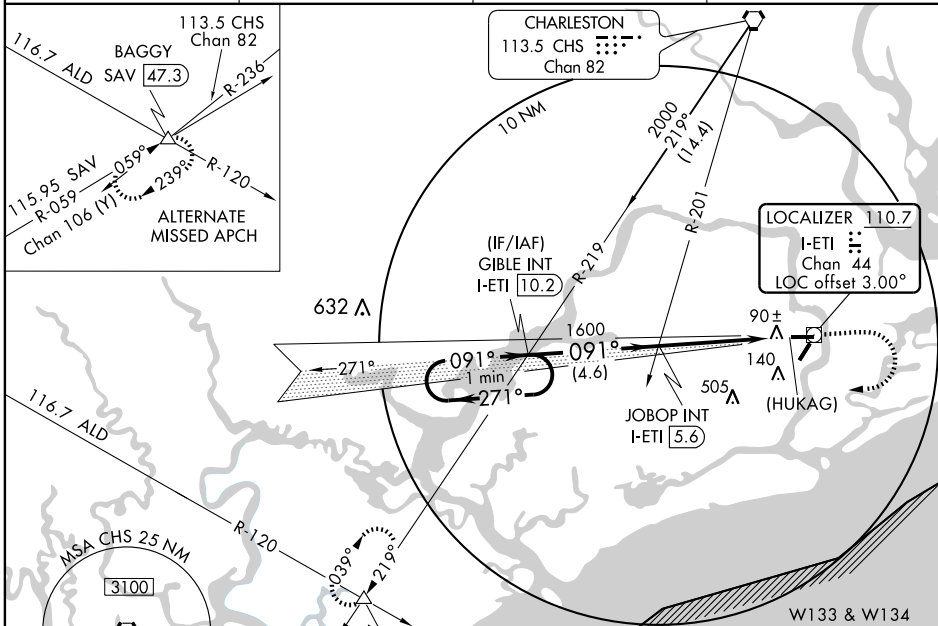
CHARLESTON EXECUTIVE (JZI)

LOC/DME I-ETI <b>110.7</b> Chan <b>44</b>	APP CRS <b>091°</b>	Rwy Idg TDZE Apt Elev	<b>5000</b> <b>17</b> <b>17</b>
---	------------------------	-----------------------------	---------------------------------------

▼ If local altimeter setting not received, use Charleston AFB/Intl altimeter setting and increase all DAs 32 feet and all MDAs 40 feet. Visibility  
▲ reduction by helicopters NA. VDP NA when using Charleston AFB/Intl altimeter setting. DME REQUIRED.

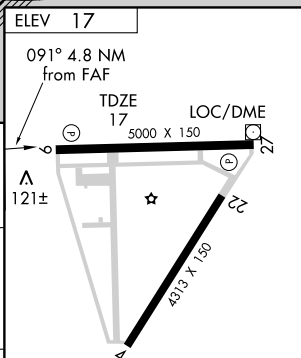
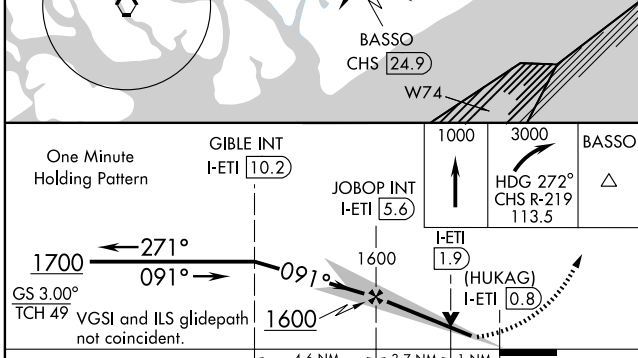
MISSED APPROACH: Climb to 1000 then climbing right turn to 3000 via heading 272° and CHS R-219 to BASSO/CHS 24.9 DME and hold.

AWOS-3 <b>123.775</b>	CHARLESTON APP CON <b>120.7 306.925</b>	CLNC DEL <b>127.15</b>	UNICOM <b>122.8 (CTAF)</b>
--------------------------	--	---------------------------	-------------------------------



SE-2, 22 OCT 2009 to 19 NOV 2009

SE-2, 22 OCT 2009 to 19 NOV 2009



CATEGORY	A	B	C	D
S-ILS 9	267- <sup>3</sup> / <sub>4</sub> 250 (300- <sup>3</sup> / <sub>4</sub> )			
S-LOC 9	380-1	363 (400-1)	380-1 <sup>1</sup> / <sub>4</sub> 363 (400-1 <sup>1</sup> / <sub>4</sub> )	
CIRCLING	440-1 423 (500-1)	480-1 463 (500-1)	480-1 <sup>1</sup> / <sub>2</sub> 463 (500-1 <sup>1</sup> / <sub>2</sub> )	580-2 563 (600-2)

MIRL Rwy 4-22		MIRL Rwy 9-27	
FAF to MAP 4.8 NM			
Knots	60	90	120 150 180
Min:Seq	4:48	3:12	2:24 1:55 1:36