

FAIRMONT, MINNESOTA

AL-5353 (FAA)

VOR/DME FRM 110.2 Chan 39	APP CRS 305°	Rwy Idg TDZE Apt Elev	5505 1162 1162
---	------------------------	-----------------------------	---

VOR/DME RWY 31

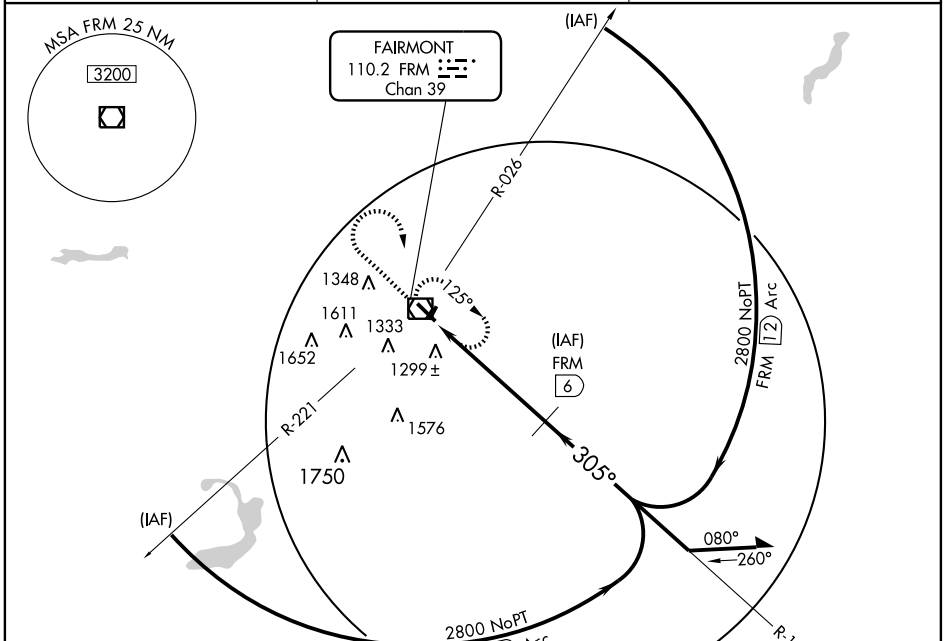
FAIRMONT MUNI (FRM)

Category D S-31 visibilities increased ¼ mile for inoperative MALS. Inoperative components table does not apply to Categories A, B and C.

MALS R-026

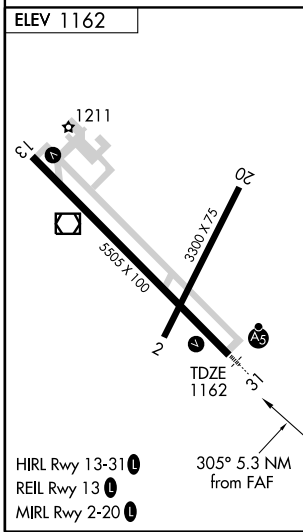
MISSED APPROACH: Climb to 2500 then climbing right turn to 3000 direct FRM VOR/DME and hold.

AWOS-3 110.2	MINNEAPOLIS CENTER 127.75 257.7	UNICOM 122.8 (CTAF)
------------------------	---	-------------------------------



NC-1, 22 OCT 2009 to 19 NOV 2009

NC-1, 22 OCT 2009 to 19 NOV 2009



ELEV 1162	2500	3000	FRM 110.2	FRM 6	Remain within 10 NM
	↑	↷			
	VOR/DME	FRM 1.8	FRM 1	FRM 6	
			0.3	0.8	4.2 NM
			2.83°	TCH 43	
CATEGORY	A	B	C	D	
S-31	1560-1 398 (400-1)				
CIRCLING	1660-1 498 (500-1)	1660-1 ½ 498 (500-1½)	1720-2 558 (600-2)		

FAIRMONT, MINNESOTA
Amdt 1B 09127

43°39'N-94°25'W

FAIRMONT MUNI (FRM) VOR/DME RWY 31