

FAIRMONT, MINNESOTA

AL-5353 (FAA)

**VOR RWY 31**  
FAIRMONT MUNI (FRM)

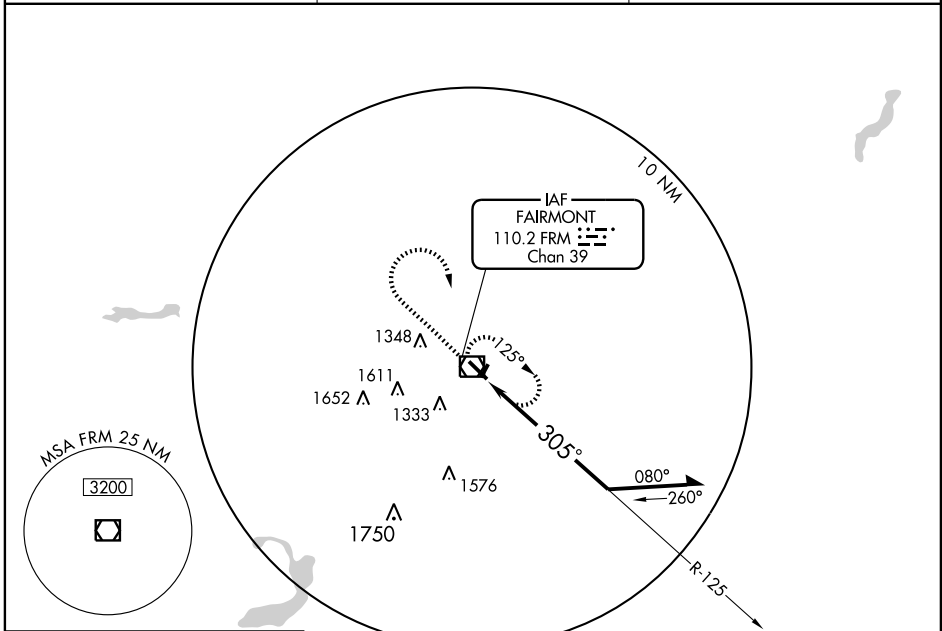
VOR/DME FRM <b>110.2</b> Chan <b>39</b>	APP CRS <b>305°</b>	Rwy Idg TDZE Apt Elev	<b>5505</b> <b>1162</b> <b>1162</b>
---	------------------------	-----------------------------	---

⚠ When local altimeter setting not received, use St. James altimeter setting and increase all MDA 80 feet, increase S-31 Cat C/D visibility and circling Cat C visibility ¼ mile. VDP NA when using St. James altimeter setting.



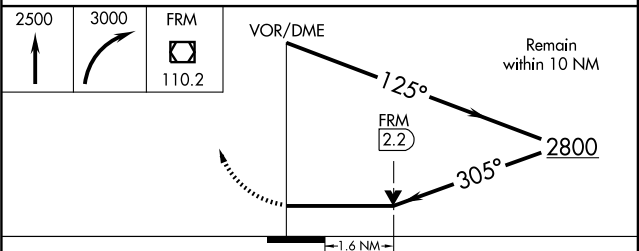
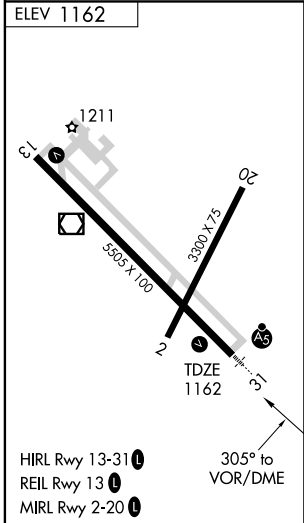
MISSED APPROACH: Climb to 2500 then climbing right turn to 3000 direct FRM VOR/DME and hold.

AWOS-3 <b>110.2</b>	MINNEAPOLIS CENTER <b>127.75 257.7</b>	UNICOM <b>122.8 (CTAF) 1</b>
------------------------	---	---------------------------------



NC-1, 22 OCT 2009 to 19 NOV 2009

NC-1, 22 OCT 2009 to 19 NOV 2009



CATEGORY	A	B	C	D
S-31	1700-½ 538 (600-½)		1700-1 538 (600-1)	1700-1¼ 538 (600-1¼)
CIRCLING	1700-1 538 (600-1)		1700-1½ 538 (600-1½)	1720-2 558 (600-2)

FAIRMONT, MINNESOTA  
Amdt 8 09127

43°39'N-94°25'W

FAIRMONT MUNI (FRM)  
**VOR RWY 31**