

FAIRMONT, MINNESOTA

AL-5353 (FAA)

VOR RWY 13

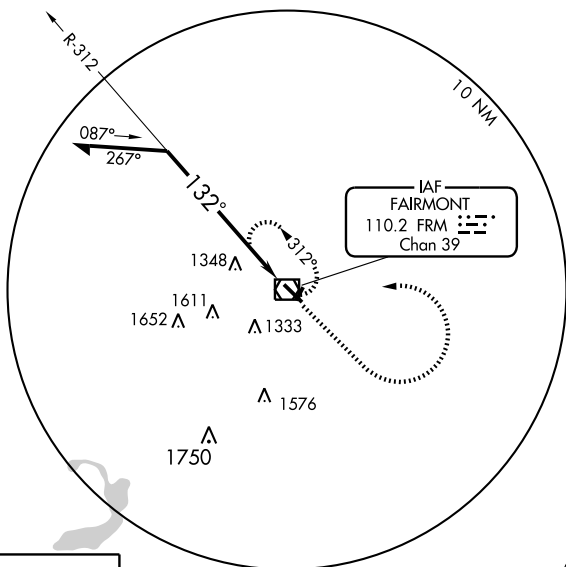
FAIRMONT MUNI (FRM)

| | | | |
|---|------------------------|-----------------------------|---|
| VOR/DME FRM 110.2 Chan 39 | APP CRS 132° | Rwy Idg TDZE Apt Elev | 5505 1162 1162 |
|---|------------------------|-----------------------------|---|

⚠ Visibility reduction by helicopters NA.
⚠ When local altimeter setting not received, use St. James altimeter setting and increase all MDA 80 feet, increase S-13 Cat C/D visibility and circling Cat C visibility ¼ mile. VDP NA when using St. James altimeter setting.

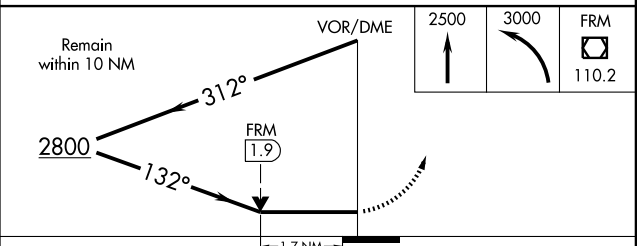
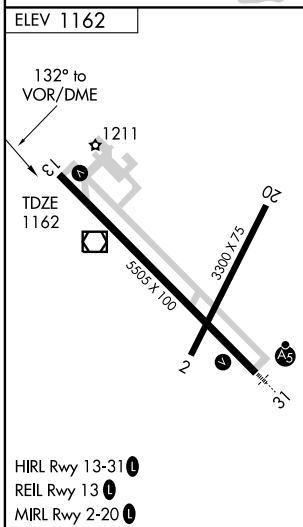
MISSED APPROACH: Climb to 2500 then climbing left turn to 3000 direct FRM VOR/DME and hold.

| | | |
|------------------------|---|--|
| AWOS-3 110.2 | MINNEAPOLIS CENTER 127.75 257.7 | UNICOM 122.8 (CTAF) 📻 |
|------------------------|---|--|



NC-1, 22 OCT 2009 to 19 NOV 2009

NC-1, 22 OCT 2009 to 19 NOV 2009



| CATEGORY | A | B | C | D |
|----------|--------|-------------|-------------------------|-------------------------|
| S-13 | 1740-1 | 578 (600-1) | 1740-1½ 578 (600-1½) | 1740-1¾ 578 (600-1¾) |
| CIRCLING | 1740-1 | 578 (600-1) | 1740-1½ 578 (600-1½) | 1740-2 578 (600-2) |

FAIRMONT, MINNESOTA
Amdt 5 09127

43°39'N-94°25'W

FAIRMONT MUNI (FRM) VOR RWY 13