


RNAV (GPS) RWY 31

FAIRMONT MUNI (FRM)

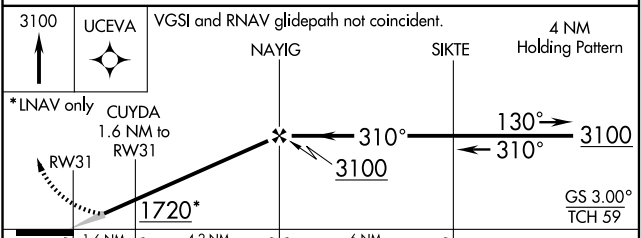
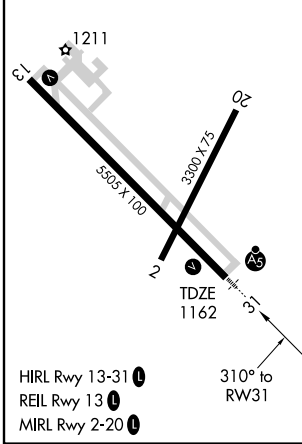
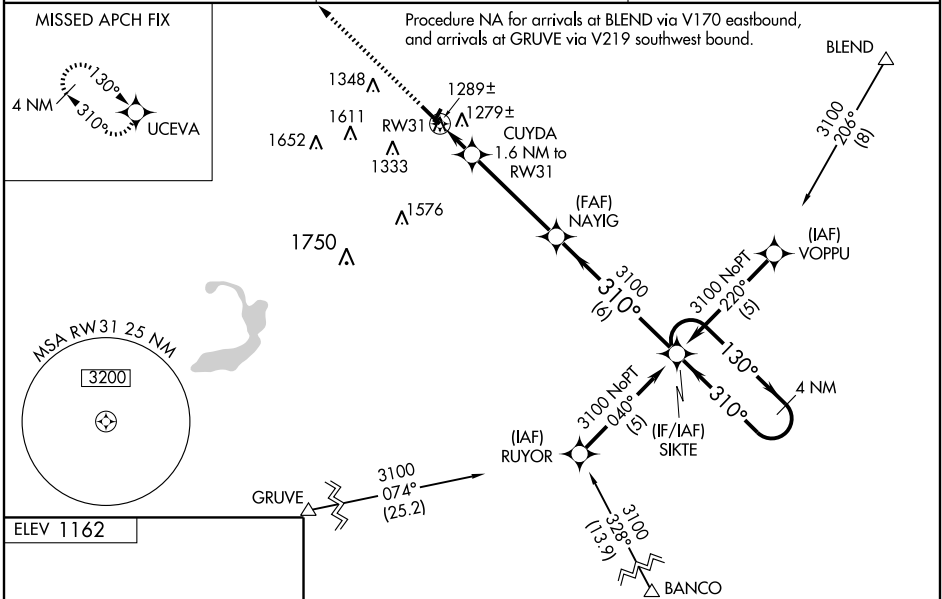
WAAS CH 90412 W 31A	APP CRS 310°	Rwy Idg TDZE Apt Elev	5505 1162 1162
---	------------------------	-----------------------------	---

⚠ For inoperative MALSR, increase LPV all Cats visibility to 1 mile and LNAV Cat D visibility to 1 1/4 mile.
 For uncompensated Baro-VNAV systems, LNAV/VNAV NA below -17°C (2°F) or above 46°C (114°F). DME/DME RNP-0.3 NA.
 When local altimeter setting not received, use St. James altimeter setting and increase all DA 63 feet and all MDA 80 feet, increase LPV and LNAV/VNAV all Cats visibility and LNAV Cat C visibility 1/4 mile.
 Baro-VNAV NA when using St. James altimeter setting.
 For inoperative MALSR when using St. James altimeter setting, increase LPV all Cats visibility 1/2 mile.

MALSR 

MISSED APPROACH: Climb to 3100 direct UCEVA and hold.

AWOS-3 110.2	MINNEAPOLIS CENTER 127.75 257.7	UNICOM 122.8 (CTAF)
------------------------	---	-------------------------------



CATEGORY	A	B	C	D
LPV DA	1467-1/2		305 (400-1/2)	
LNAV/VNAV DA	1581-1		419 (500-1)	
LNAV MDA	1560-1/2		398 (400-1/2)	
CIRCLING	1640-1		1640-1 1/2	1720-2
	478 (500-1)		478 (500-1 1/2)	558 (600-2)

NC-1, 22 OCT 2009 to 19 NOV 2009

NC-1, 22 OCT 2009 to 19 NOV 2009