

# RNAV (GPS) RWY 13

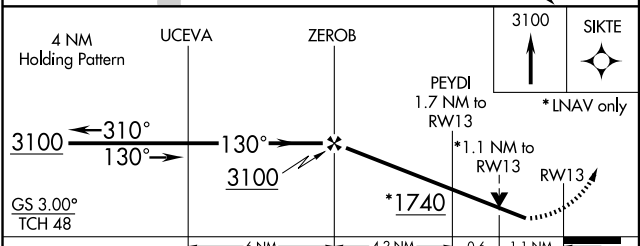
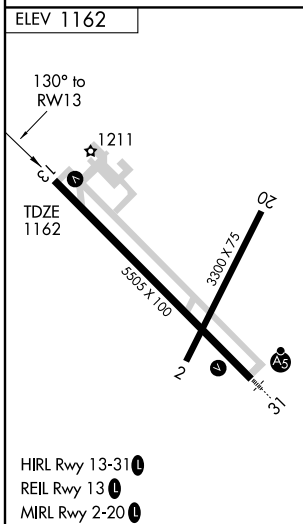
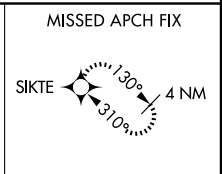
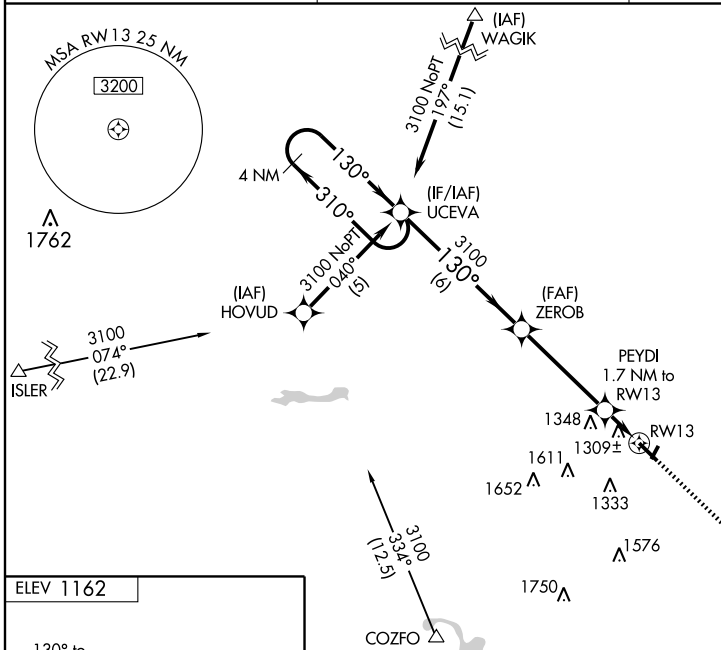
FAIRMONT MUNI (FRM)

WAAS CH <b>45812</b> <b>W13A</b>	APP CRS <b>130°</b>	Rwy Idg TDZE <b>1162</b> Apt Elev <b>1162</b>	<b>5505</b> <b>1162</b> <b>1162</b>
--	------------------------	---	---

**⚠** For uncompensated Baro-VNAV systems, LNAV/VNAV NA below -17°C (2°F) or above 46°C (114°F).  
**⚠** DME/DME RNP-0.3 NA. Visibility reduction by helicopters NA.  
 When local altimeter setting not received, use St. James altimeter setting and increase all DA 63 feet and all MDA 80 feet, increase LPV all Cats visibility and LNAV Cat C/D visibility 1/4 mile.  
 Baro-VNAV and VDP NA when using St. James altimeter setting.

MISSED APPROACH: Climb to 3100 direct SIKTE and hold.

AWOS-3 <b>110.2</b>	MINNEAPOLIS CENTER <b>127.75 257.7</b>	UNICOM <b>122.8 (CTAF) 0</b>
------------------------	---	---------------------------------



CATEGORY	A	B	C	D
LPV DA	1460-1 298 (300-1)			
LNAV/VNAV DA	1695-2 533 (600-2)			
LNAV MDA	1560-1 398 (400-1)			1560-1 1/4 398 (400-1 1/4)
CIRCLING	1640-1 478 (500-1)	1640-1 1/2 478 (500-1 1/2)		1720-2 558 (600-2)

NC-1, 22 OCT 2009 to 19 NOV 2009

NC-1, 22 OCT 2009 to 19 NOV 2009