

RNAV (GPS) RWY 7

MARION MUNI (MNN)

WAAS CH 93604 W07A	APP CRS 065°	Rwy Idg TDZE Apt Elev	5000 990 993
----------------------------------------	------------------------	-----------------------------	-----------------------------------------

MISSED APPROACH:
Climb to 3000 direct
LEBJE and hold.

▼ If local altimeter setting not received, use Ohio State University altimeter setting and increase LPV DA 87 feet, LNAV/VNAV DA 195 feet, and all MDAS 100 feet.
▲ Baro-VNAV NA when using Ohio State University altimeter setting. For uncompensated Baro-VNAV systems, LNAV/VNAV NA below -16°C (4°F) or above 46°C (114°F).
Visibility reduction by helicopters NA. DME/DME RNP-0.3 NA.

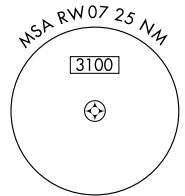
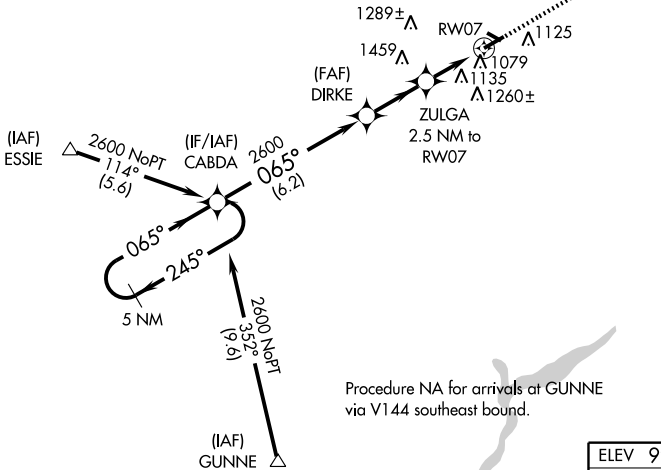
ASOS
119.975

MANSFIELD APP CON *
124.2 390.8

CLNC DEL
126.8

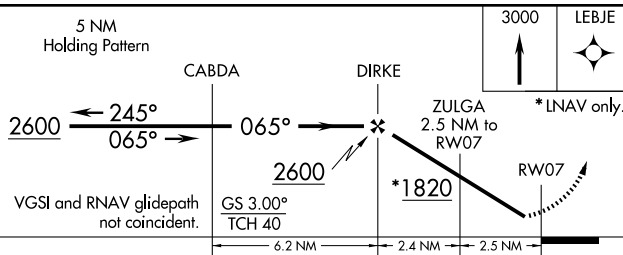
UNICOM
122.8 (CTAF) **0**

MISSED APCH FIX

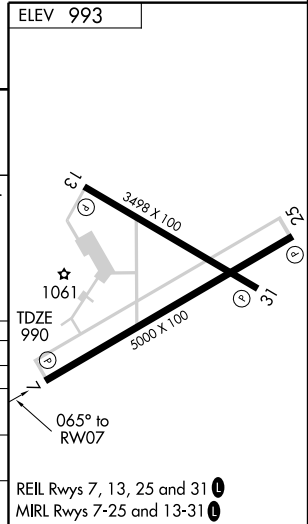


Procedure NA for arrivals at GUNNE via V144 southeast bound.

ELEV 993



CATEGORY	A	B	C	D
LPV DA	1240-1 250 (300-1)			
LNAV/VNAV DA	1379-1½ 389 (400-1½)			
LNAV MDA	1440-1 450 (500-1)	1440-1¼ 450 (500-1¼)		1440-1½ 450 (500-1½)
CIRCLING	1480-1 487 (500-1)	1500-1 507 (600-1)	1540-1½ 547 (600-1½)	1560-2 567 (600-2)



REIL Rwy 7, 13, 25 and 31 **0**
MIRL Rwy 7-25 and 13-31 **0**

EC-2, 22 OCT 2009 to 19 NOV 2009

EC-2, 22 OCT 2009 to 19 NOV 2009