

# RNAV (GPS) RWY 25

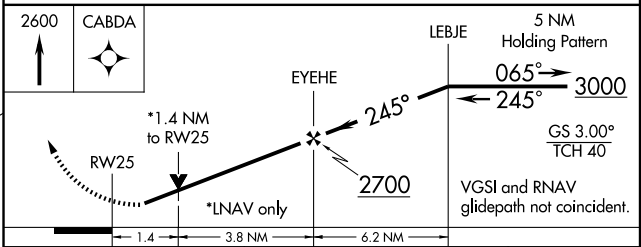
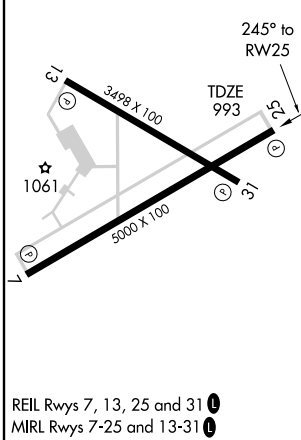
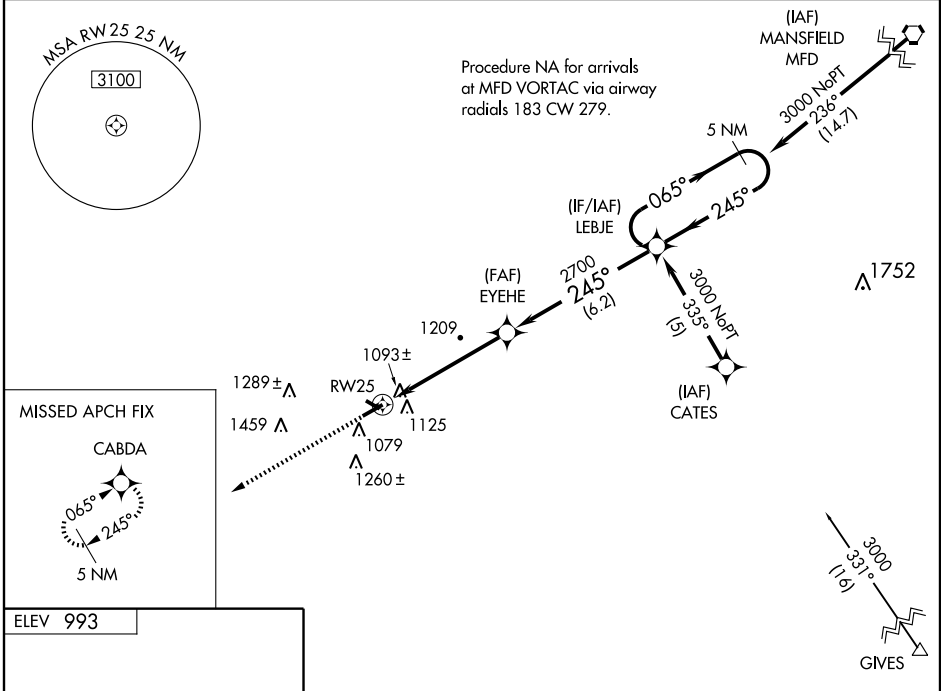
MARION MUNI (MNN)

WAAS CH <b>62904</b> <b>W25A</b>	APP CRS <b>245°</b>	Rwy Idg TDZE Apt Elev	<b>5000</b> <b>993</b> <b>993</b>
--	------------------------	-----------------------------	---

**▼** If local altimeter setting not received, use Ohio State University altimeter setting and increase all DAs 87 feet and all MDAs 100 feet. Baro-VNAV NA when using Ohio State University altimeter setting. For uncompensated Baro-VNAV systems, LNAV/VNAV NA below -16°C (4°F) or above 47°C (116°F). Visibility reduction by helicopters NA. DME/DME RNP-0.3 NA.

MISSED APPROACH: Climb to 2600 direct CABDA and hold.

ASOS <b>119.975</b>	MANSFIELD APP CON * <b>124.2 390.8</b>	CLNC DEL <b>126.8</b>	UNICOM <b>122.8 (CTAF) 0</b>
------------------------	---	--------------------------	---------------------------------



CATEGORY	A	B	C	D
LPV DA	1334-1¼	341 (400-1¼)		
LNAV/VNAV DA	1443-1½	450 (500-1½)		
LNAV MDA	1460-1 467 (500-1)	1460-1¼ 467 (500-1¼)	1460-1½ 467 (500-1½)	1560-2 567 (600-2)
CIRCLING	1480-1 487 (500-1)	1500-1 507 (600-1)	1540-1½ 547 (600-1½)	1560-2 567 (600-2)