

# RNAV (GPS) RWY 13

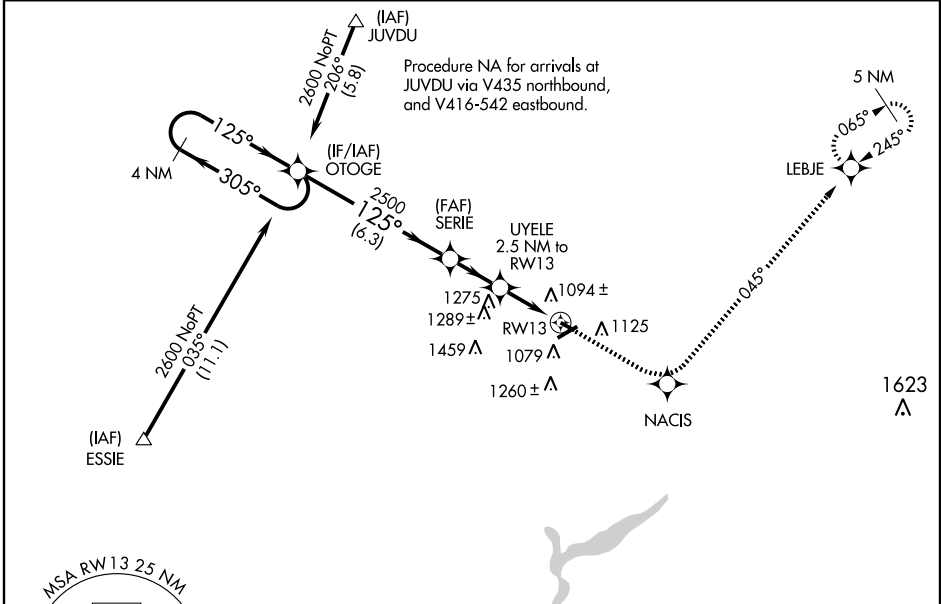
MARION MUNI (MNN)

APP CRS	Rwy Idg	<b>3498</b>
<b>125°</b>	TDZE	<b>990</b>
	Apt Elev	<b>993</b>

- ▼ DME/DME RNP-0.3 NA. Visibility reduction by helicopters NA.
- ▲ When local altimeter setting not received, use Ohio State altimeter setting and increase all MDAs 100 feet and visibility Cats C and D and circling Cat C ¼ mile.

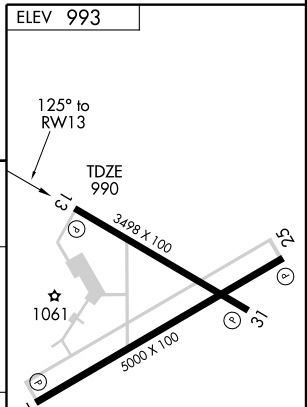
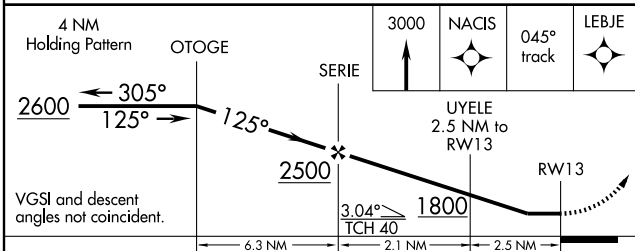
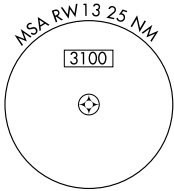
MISSED APPROACH: Climb to 3000 direct NACIS and via 045° track to LEBJE and hold.

ASOS <b>119.975</b>	MANSFIELD APP CON * <b>124.2 390.8</b>	CLNC DEL <b>126.8</b>	UNICOM <b>122.8</b> (CTAF) <b>0</b>
------------------------	---	--------------------------	--



EC-2, 22 OCT 2009 to 19 NOV 2009

EC-2, 22 OCT 2009 to 19 NOV 2009



CATEGORY	A	B	C	D
LNVA MDA	1360-1 370 (400-1)		1360-1¼ 370 (400-1¼)	
CIRCLING	1480-1 487 (500-1)	1500-1 507 (600-1)	1540-1½ 547 (600-1½)	1560-2 567 (600-2)

REIL Rwy 7, 13, 25 and 31 **0**  
MIRL Rwy 7-25 and 13-31 **0**