

FORT STOCKTON, TEXAS

AL-5350 (FAA)

VORTAC FST 116.9 Chan 116	APP CRS 296°	Rwy Idg TDZE Apt Elev	7508 3011 3011
---	------------------------	-----------------------------	---

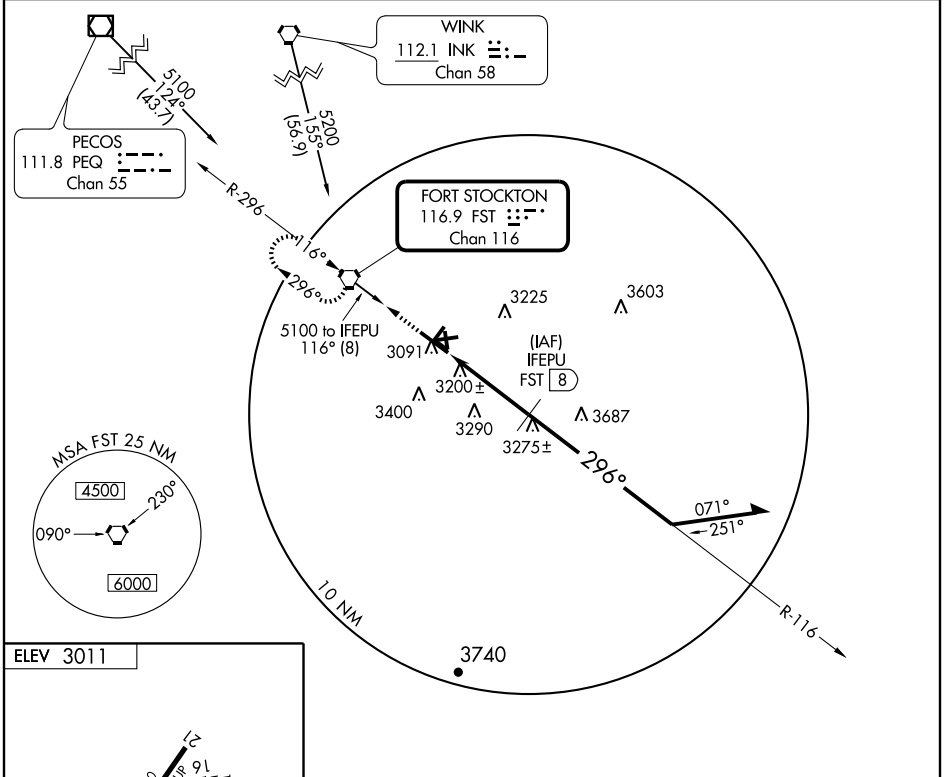
VOR/DME RWY 30

FORT STOCKTON-PECOS COUNTY (FST)

NA

MISSED APPROACH: Climb to 5000 direct FST VORTAC and hold.

ASOS 118.525	ALBUQUERQUE CENTER 135.875 292.15	UNICOM 122.8 (CTAF)
------------------------	---	-------------------------------



FORT STOCKTON, TEXAS
Orig 09295

30°55'N - 102°55'W

VOR/DME RWY 30

SC-3, 22 OCT 2009 to 19 NOV 2009

SC-3, 22 OCT 2009 to 19 NOV 2009