

VOR RWY 12

FORT STOCKTON-PECOS COUNTY (FST)

VORTAC FST 116.9 Chan 116	APP CRS 116°	Rwy Idg TDZE Apt Elev	7508 3002 3011
---	------------------------	-----------------------------	---

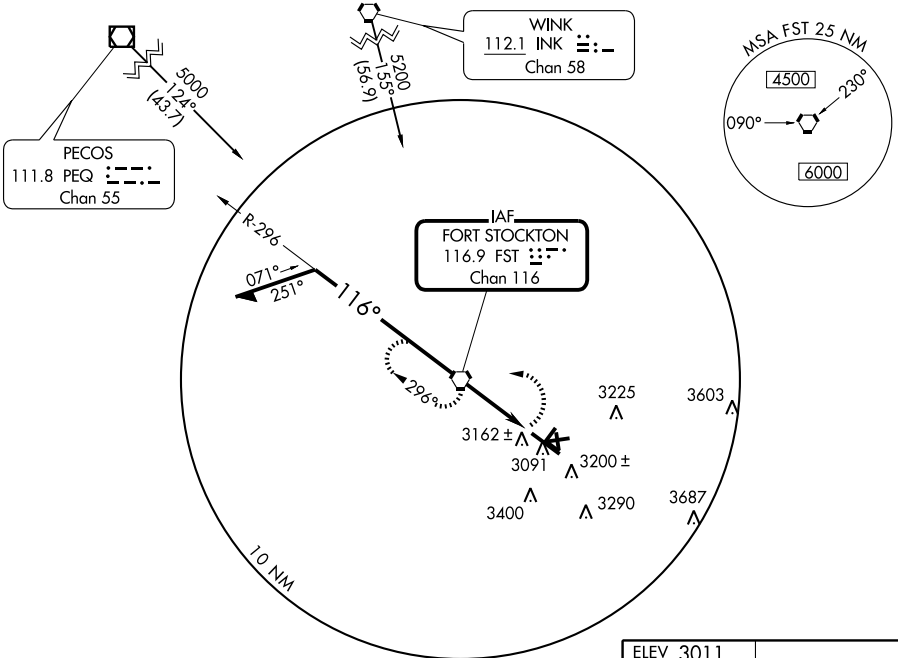
▼
▲ NA

MISSED APPROACH: Climbing left turn to 5000 direct FST VORTAC and hold.

ASOS
118.525

ALBUQUERQUE CENTER
135.875 292.15

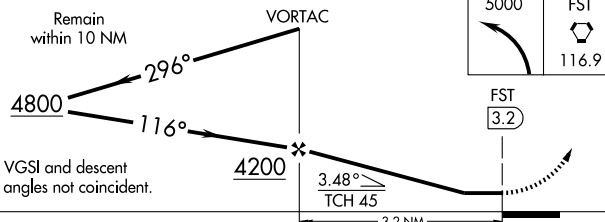
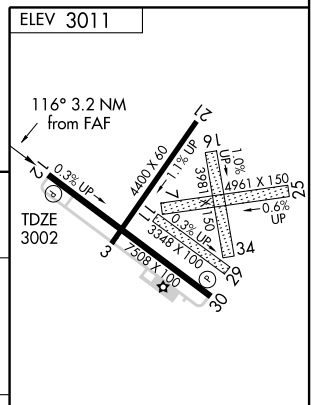
UNICOM
122.8 (CTAF) **0**



SC-3, 22 OCT 2009 to 19 NOV 2009

SC-3, 22 OCT 2009 to 19 NOV 2009

▲ 4061



CATEGORY	A	B	C	D
S-12	3500-1	498 (500-1)	3500-1¼ 498 (500-1¼)	3500-1½ 498 (500-1½)
CIRCLING	3540-1	529 (600-1)	3540-1½ 529 (600-1½)	3760-2½ 749 (800-2½)

MIRL Rwy's 3-21 and 12-30 **0**

FAF to MAP 3.2 NM

Knots	60	90	120	150	180
Min:Sec	3:12	2:08	1:36	1:17	1:04