

RNAV (GPS) RWY 30

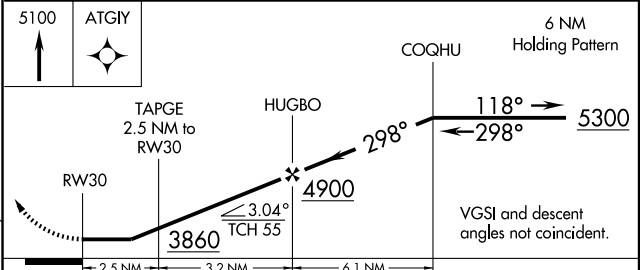
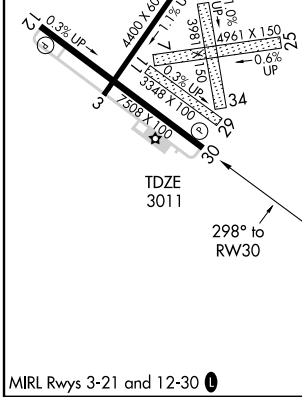
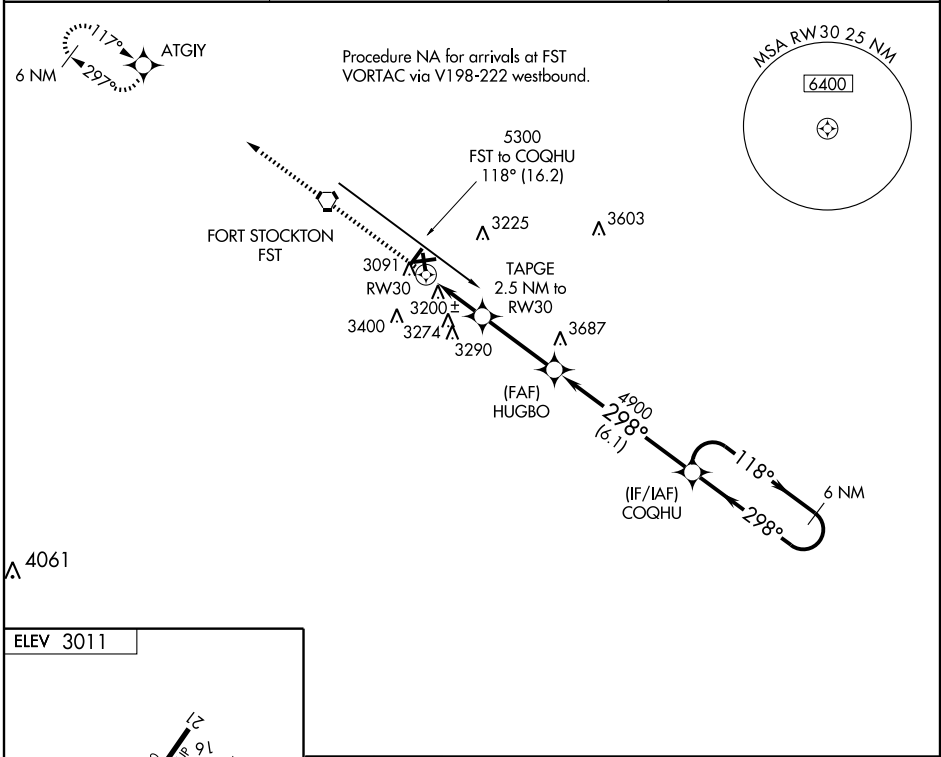
FORT STOCKTON-PECOS COUNTY (FST)

APP CRS	Rwy Idg	7508
298°	TDZE	3011
	Apt Elev	3011

▼ DME/DME RNP-0.3 NA. Visibility reduction by helicopters NA. When local altimeter setting not received, use Pecos altimeter setting and increase all MDA 160 feet, increase LNAV Cat C/D visibility ½ mile, Circling Cat C visibility ¾ mile, Cat D visibility ½ mile. Circling to Rwy 11-29, 7-25, 16-34 NA. Procedure NA at night.

▲ MISSED APPROACH: Climb to 5100 direct ATGIY and hold.

ASOS 118.525	ALBUQUERQUE CENTER 135.875 292.15	UNICOM 122.8 (CTAF) 0
------------------------	---	---------------------------------



CATEGORY	A	B	C	D
LNAV MDA	3500-1	489 (500-1)	3500-1¼ 489 (500-1¼)	3500-1½ 489 (500-1½)
CIRCLING	3540-1	529 (600-1)	3600-1½ 589 (600-1½)	3760-2½ 749 (800-2½)

SC-3, 22 OCT 2009 to 19 NOV 2009

SC-3, 22 OCT 2009 to 19 NOV 2009