

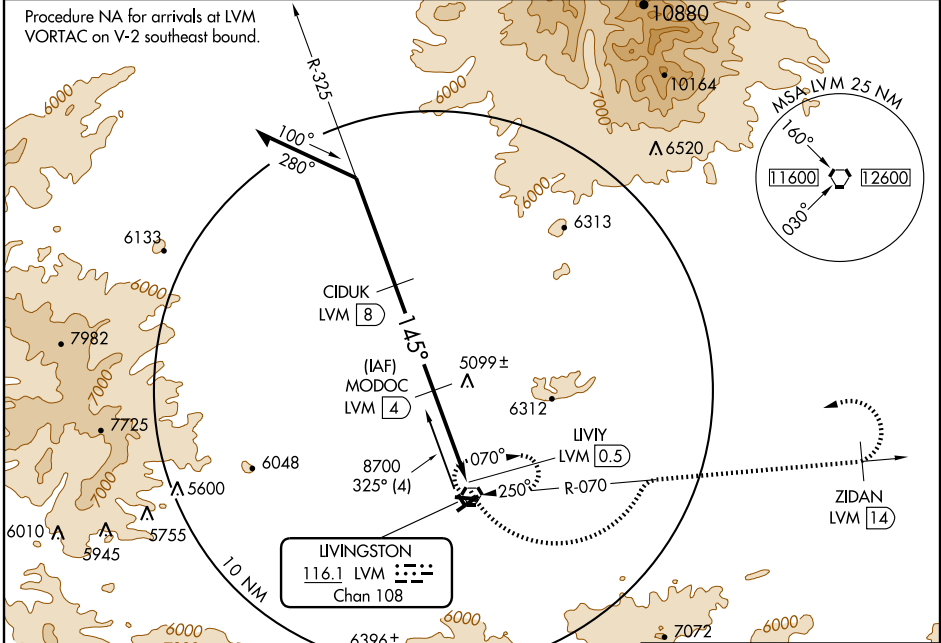
VORTAC LVM <b>116.1</b> Chan <b>108</b>	APP CRS <b>145°</b>	Rwy Idg TDZE Apt Elev <b>N/A</b> <b>N/A</b> <b>4660</b>
---	------------------------	--

# VOR/DME-B

LIVINGSTON/ MISSION FIELD (LVM)

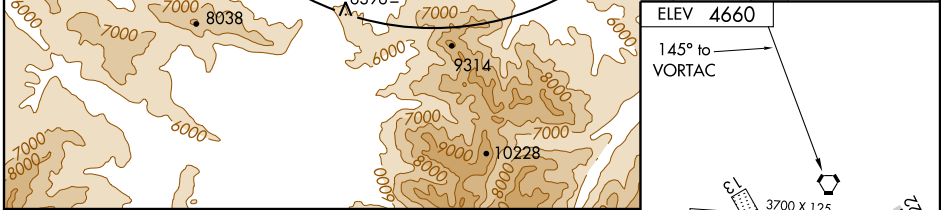
**MISSED APPROACH:** Climbing left turn to 9900 via LVM VORTAC R-070 to ZIDAN/1.4 DME and left turn direct LVM VORTAC and hold.

ASOS <b>135.275</b>	GREAT FALLS RADIO <b>122.2</b>	UNICOM <b>123.0</b> (CTAF)
------------------------	-----------------------------------	-------------------------------



NW-1, 22 OCT 2009 to 19 NOV 2009

NW-1, 22 OCT 2009 to 19 NOV 2009



Remain within 12 NM	MODOC LVM [4]	9900 LVM R-070	ZIDAN LVM [14]	LVM [116.1]
8700	CIDUK LVM [8]	LIVIY LVM [0.5]		
7400				
6300				
4 NM	3.5 NM			

CATEGORY	A	B	C	D
CIRCLING	5540-1 880 (900-1)	5540-1¼ 880 (900-1¼)	5540-2½ 880 (900-2½)	5580-3 920 (1000-3)

ELEV 4660  
145° to VORTAC

REIL Rwy 22  
MIRL Rwy 4-22