

VOR/DME IMT <b>111.2</b> Chan <b>49</b>	APP CRS <b>323°</b>	Rwy Idg <b>3809</b> TDZE <b>1131</b> Apt Elev <b>1182</b>
---	------------------------	---

# VOR RWY 31

IRON MOUNTAIN/FORD (IMT)

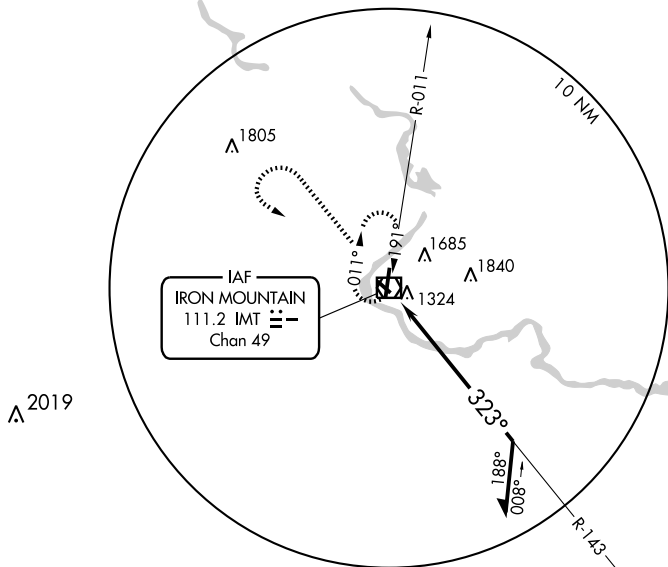
▼ Circling NA NE of Rwy 19 and 31. Procedure NA at night. Visibility reduction by helicopters NA.  
 ▲ When local altimeter setting not received, use Escanaba altimeter setting and increase all MDA 180 feet, and increase S-31 and Circling Cat B visibility ¼ mile and Cats C and D visibility ½ mile.

MISSED APPROACH: Climb to 3100 then left turn direct IMT VOR/DME and hold.

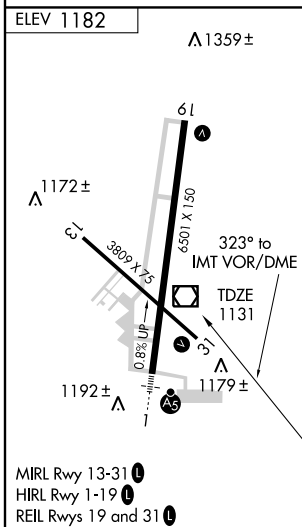
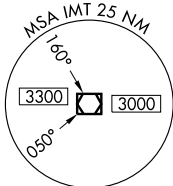
ASOS <b>119.025</b>	MINNEAPOLIS CENTER <b>121.25 322.5</b>	UNICOM <b>122.8 (CTAF) 0</b>
------------------------	---	---------------------------------

EC-1, 22 OCT 2009 to 19 NOV 2009

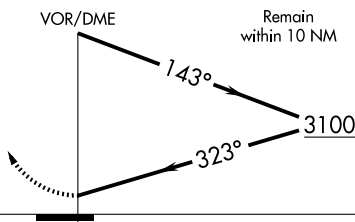
EC-1, 22 OCT 2009 to 19 NOV 2009



IAF  
IRON MOUNTAIN  
111.2 IMT  
Chan 49



3100	IMT 111.2
------	--------------



CATEGORY	A	B	C	D
S-31	1760-1 629 (600-1)		1760-1¾ 629 (600-1¾)	1760-2 629 (600-2)
CIRCLING	1760-1 578 (600-1)		1780-1¾ 598 (600-1¾)	1780-2 598 (600-2)