

**NDB RWY 1**  
IRON MOUNTAIN/FORD (IMT)

LOM IM <b>255</b>	APP CRS <b>010°</b>	Rwy Idg <b>6501</b>
		TDZE <b>1133</b>
		Apt Elev <b>1182</b>

⚠ Circling not authorized NE of Rws 19 and 31.  
Circling not authorized at night to Rwy 31.

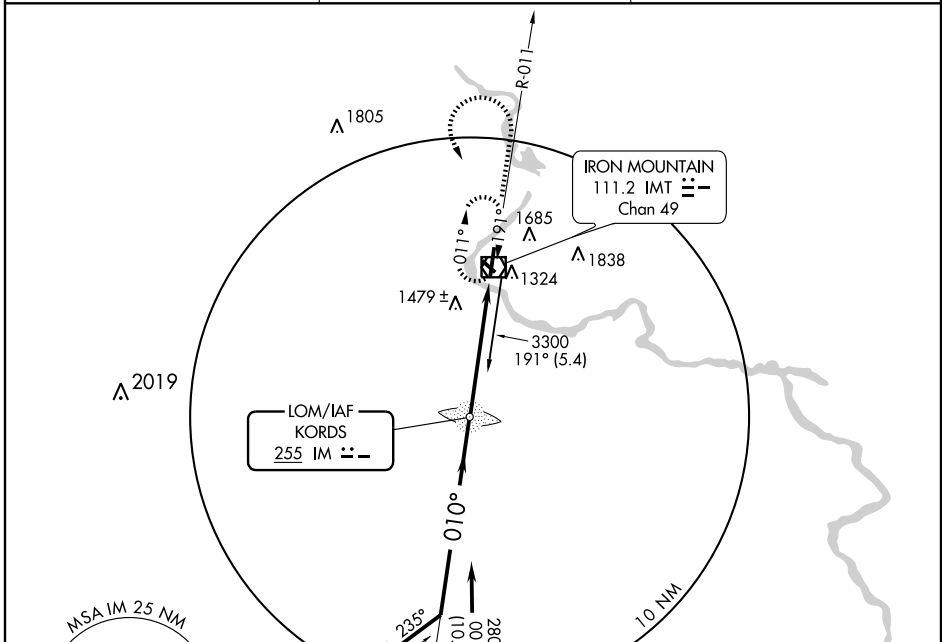


MISSED APPROACH: Climb to 3100, then left turn direct IMT VOR/DME and hold.

ASOS  
**119.025**

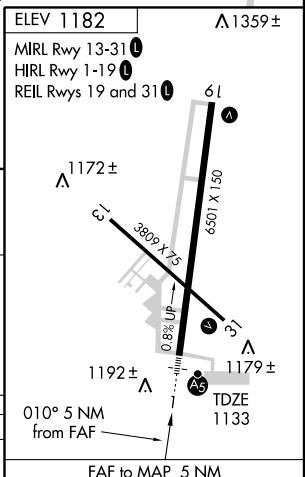
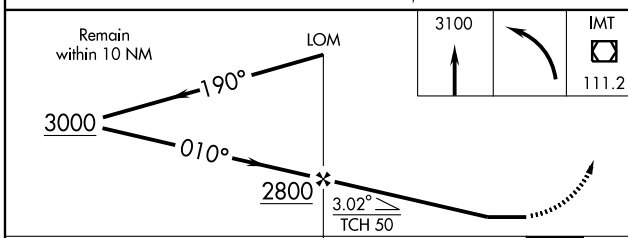
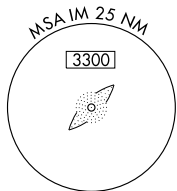
MINNEAPOLIS CENTER  
**121.25 322.5**

UNICOM  
**122.8** (CTAF) **1**



EC-1, 22 OCT 2009 to 19 NOV 2009

EC-1, 22 OCT 2009 to 19 NOV 2009



CATEGORY	A	B	C	D
S-1	1780-3/4 647 (600-3/4)		1780-1 1/4 647 (600-1 1/4)	1780-1 3/4 647 (600-1 3/4)
CIRCLING	1780-1 598 (600-1)		1780-1 3/4 598 (600-1 3/4)	1780-2 598 (600-2)

FAF to MAP 5 NM					
Knots	60	90	120	150	180
Min:Sec	5:00	3:20	2:30	2:00	1:40