

NDB or GPS RWY 1

KILLEEN/ SKYLARK FIELD (I.L.E)

LOM IL 278	APP CRS 010°	Rwy Idg 4651
		TDZE 843
		Apt Elev 847

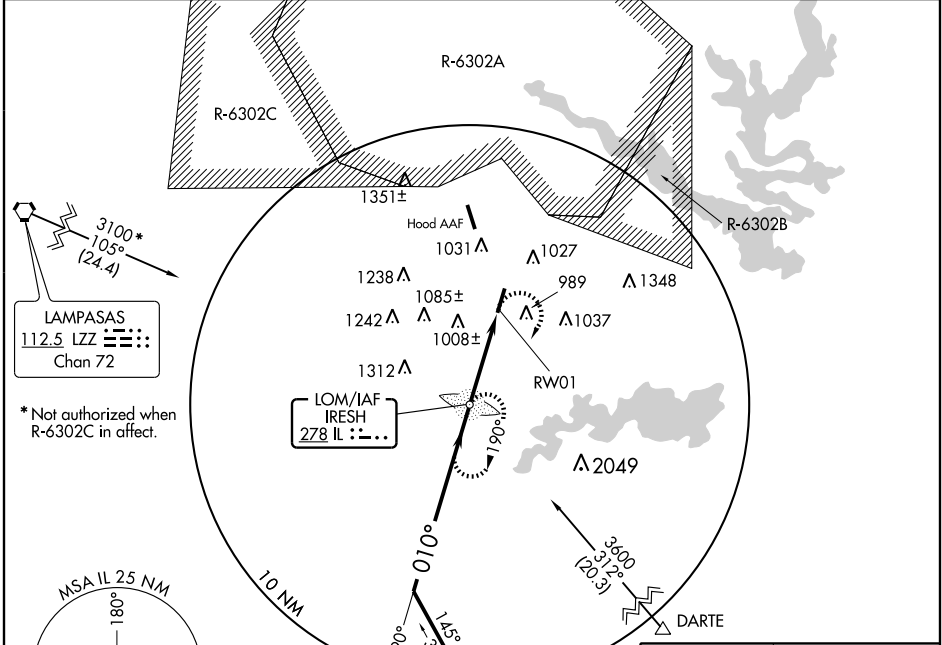
▽ When local altimeter setting not received, use Robert Gray AAF altimeter setting and increase all MDAs 60 feet.

△ NA

MALSR

MISSED APPROACH: Climbing right turn to 3100 direct IRESH LOM and hold.

AWOS-3 128.575	GRAY APP CON 120.075 323.15	CLNC DEL 121.7	UNICOM 122.7 (CTAF) 0
--------------------------	---------------------------------------	--------------------------	---------------------------------



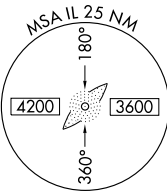
SC-3, 22 OCT 2009 to 19 NOV 2009

SC-3, 22 OCT 2009 to 19 NOV 2009

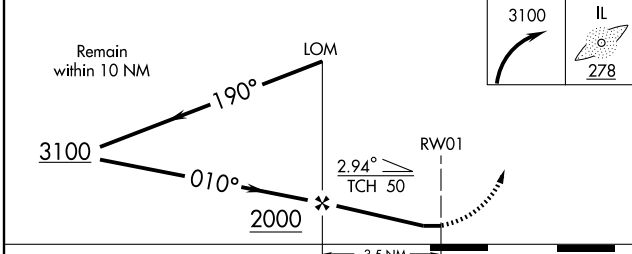
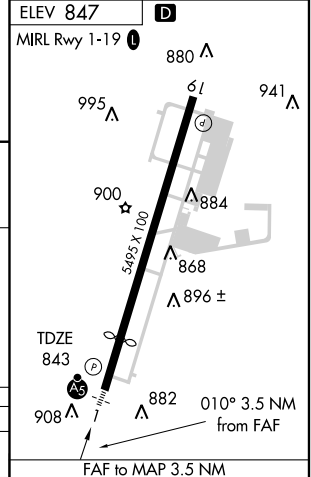
LAMPASAS
112.5 LZZ
Chan 72

3100*
105°
(24.4)

* Not authorized when R-6302C in affect.



ELEV 847	D
MIRL Rwy 1-19	



CATEGORY	A	B	C	D
S-1	1360- ³ / ₄ 517 (600- ³ / ₄)		1360-1 517 (600-1)	NA
CIRCLING	1360-1 514 (600-1)		1360-1 ¹ / ₂ 514 (600-1 ¹ / ₂)	NA

FAF to MAP 3.5 NM					
Knots	60	90	120	150	180
Min:Sec	3:30	2:20	1:45	1:24	1:10