

LAMPS THREE DEPARTURE

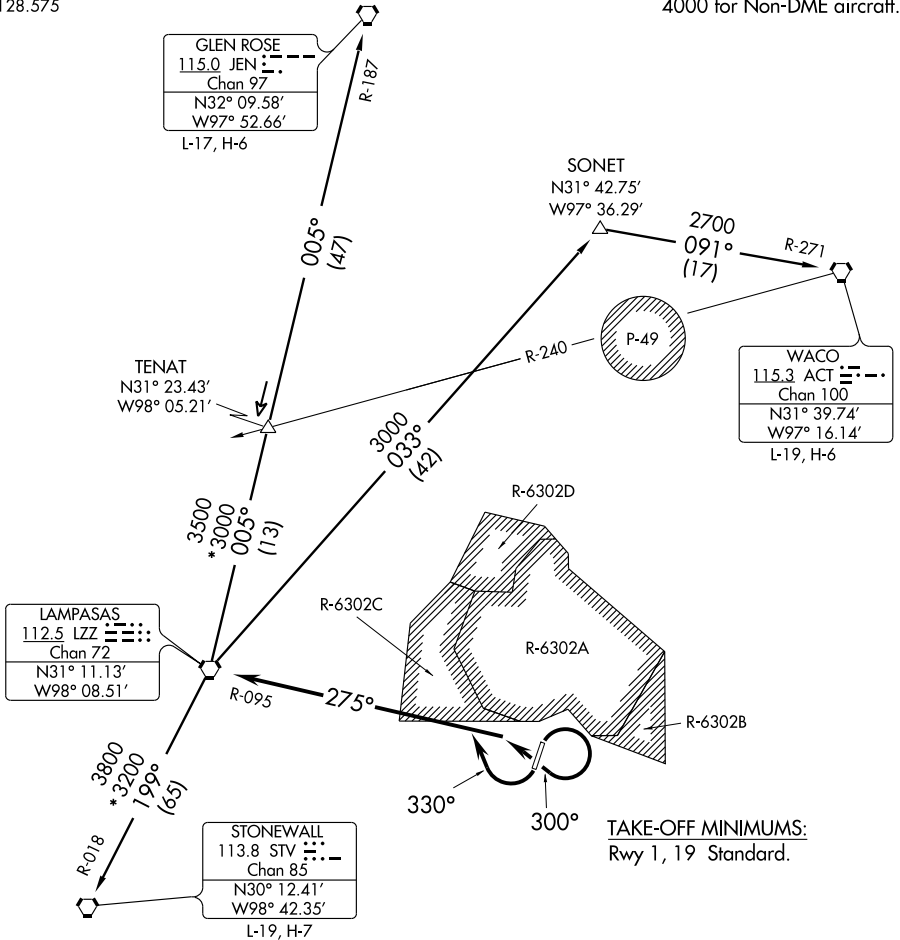
CLNC DEL
121.7
GRAY DEP CON
120.075 323.15
AWOS-3
128.575

NOTE: Chart not to scale.

NOTE: RADAR Required.
NOTE: MRA at TENAT Int
4000 for Non-DME aircraft.

SC-3, 22 OCT 2009 to 19 NOV 2009

SC-3, 22 OCT 2009 to 19 NOV 2009



TAKE-OFF OBSTACLES:

- Rwy 01 - Multiple poles beginning 317 ft from DER, 384 ft left of centerline, up to 27 ft AGL/868 ft MSL.
Tree, 973 ft from DER, 100 ft left of centerline, 28 ft AGL/876 ft MSL.
Building, 486 ft from DER, 9 ft right of centerline, 13 ft AGL/854 ft MSL.
Antenna, 351 ft from DER, 277 ft right of centerline, 11 ft AGL/852 ft MSL.
- Rwy 19 - Pole, 288 ft from DER, 588 ft right of centerline, 32 ft AGL/880 ft MSL.
Building, 102 ft from DER, 411 ft right of centerline, 8 ft AGL/856 ft MSL.
Vehicle on road, 232 ft from DER, 499 ft right of centerline, 15 ft AGL/867 ft MSL.
Pole, 256 ft from DER, 497 ft left of centerline, 32 ft AGL/873 ft MSL.
Building, 276 ft from DER, 342 ft left of centerline, 11 ft AGL/859 ft MSL.
Building, 298 ft from DER, 83 ft left of centerline, 9 ft AGL/857 ft MSL.

(NARRATIVE ON FOLLOWING PAGE)

LAMPS THREE DEPARTURE