

FORT PIERCE, FLORIDA

AL-5343 (FAA)

RNAV (GPS) RWY 28L

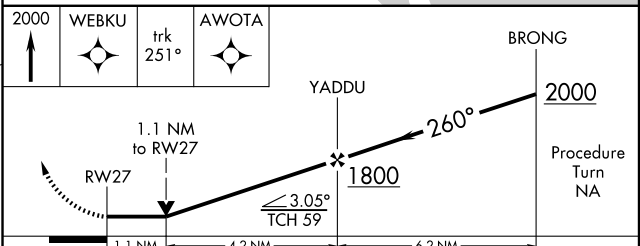
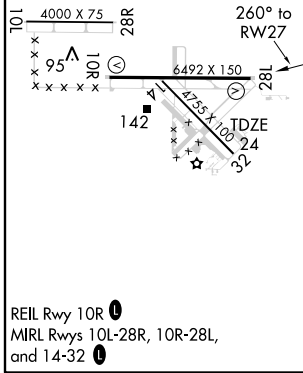
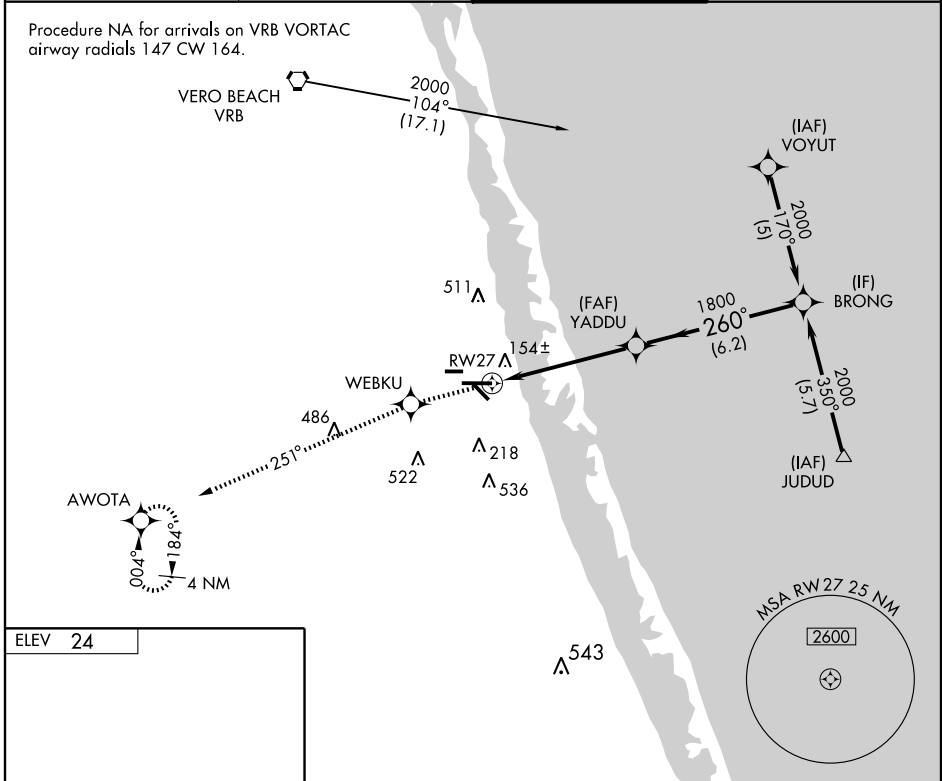
FORT PIERCE/ ST. LUCIE COUNTY INTL (F'P'R)

| | | |
|-------------|----------|-------------|
| APP CRS | Rwy Idg | 6492 |
| 260° | TDZE | 24 |
| | Apt Elev | 24 |

▼ When local altimeter setting not received, use Vero Beach altimeter setting and increase all MDA 40 feet; increase LNAV Cat C and D visibility ¼ mile.
▲ Visibility reduction by helicopters NA. DME/DME RNP-0.3 NA.
 VDP NA when using Vero Beach altimeter setting.

MISSED APPROACH: Climb to 2000 direct WEBKU and via 251° track to AWOTA and hold.

| | | | |
|------------------------|-------------------------------------|--|--------------------------|
| ATIS 134.825 | MIAMI CENTER 132.25 370.9 | FORT PIERCE TOWER ★ 128.2 (CTAF) 0 | GND CON 119.55 |
|------------------------|-------------------------------------|--|--------------------------|



| | | | | |
|----------|-------------------|-------------------|---------------------|---------------------|
| CATEGORY | A | B | C | D |
| LNAV MDA | 420-1 396 (400-1) | | | 420-1¼ 396 (400-1¼) |
| CIRCLING | 460-1 436 (500-1) | 480-1 456 (500-1) | 480-1½ 456 (500-1½) | 580-2 556 (600-2) |

FORT PIERCE, FLORIDA
 Orig 09295

27°30'N-80°22'W

RNAV (GPS) RWY 28L

SE-3, 22 OCT 2009 to 19 NOV 2009

SE-3, 22 OCT 2009 to 19 NOV 2009