

RNAV (GPS) RWY 14

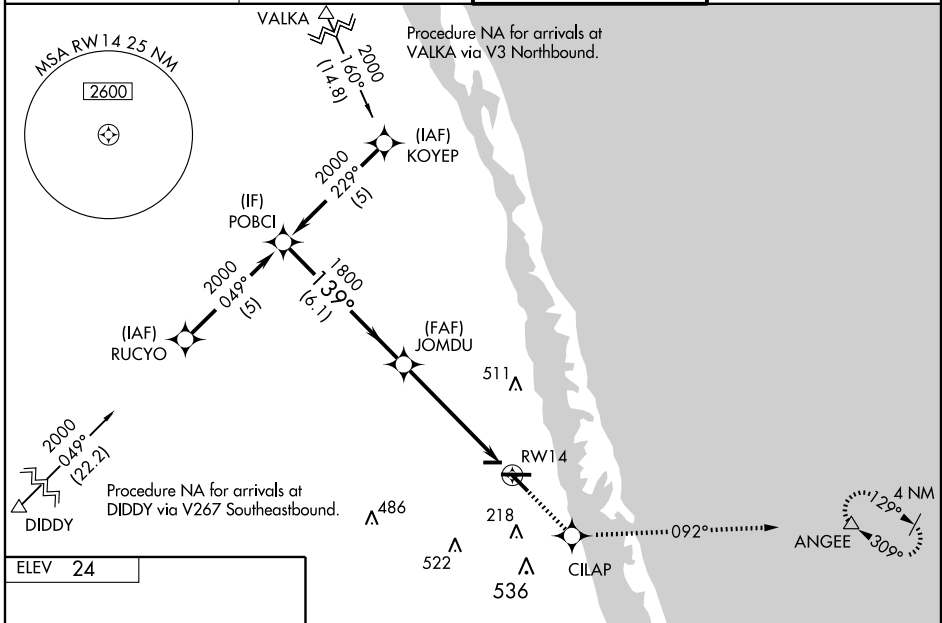
FORT PIERCE/ ST. LUCIE COUNTY INTL (F'PR)

WAAS CH 82508 W14A	APP CRS 139°	Rwy Idg 4755 TDZE 24 Aprt Elev 24
--	------------------------	--

⚠ For uncompensated Baro-VNAV systems, LNAV/VNAV NA below -15°C (5°F) or above 49°C (120°F). DME/DME RNP-0.3 NA.
 ⚠ Visibility reduction by helicopters NA.
 When local altimeter setting not received, use Vero Beach altimeter setting and increase LPV DA to 356; increase LNAV/VNAV DA to 415; Increase all MDA 40 feet; Increase LPV and LNAV/VNAV visibility ¼ mile all Cats; LNAV Cat C visibility ½ mile.
 VDP and Baro-VNAV NA when using Vero Beach altimeter setting.

MISSED APPROACH: Climb to 2000 direct CILAP and via 092° track to ANGEE and hold.

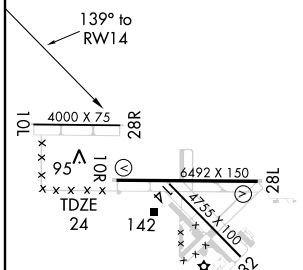
ATIS 134.825	MIAMI CENTER 132.25 370.9	FORT PIERCE TOWER * 128.2 (CTAF) 0	GND CON 119.55
------------------------	-------------------------------------	--	--------------------------



SE-3, 22 OCT 2009 to 19 NOV 2009

SE-3, 22 OCT 2009 to 19 NOV 2009

ELEV 24



Procedure Turn NA	2000	CILAP	trk 092°	ANGEE
POBCI	JOMDU	* LNAV only.		
2000	1800	* 1 NM to RWY 14	RWY 14	
GS 3.00°	TCH 45			
	6.1 NM	4.4 NM	1 NM	
CATEGORY	A	B	C	D
LPV DA	325-1 301 (400-1)			
LNAV/VNAV DA	384-1¼ 360 (400-1¼)			
LNAV MDA	400-1 376 (400-1)			400-1¼ 376 (400-1¼)
CIRCLING	460-1 436 (500-1)	480-1 456 (500-1)	480-1½ 456 (500-1½)	580-2 556 (600-2)

REIL Rwy 10R
 MIRL Rwy 10L-28R, 10R-28L,
 and 14-32