

RNAV (GPS) RWY 10R

FORT PIERCE/ ST. LUCIE COUNTY INTL (FPR)

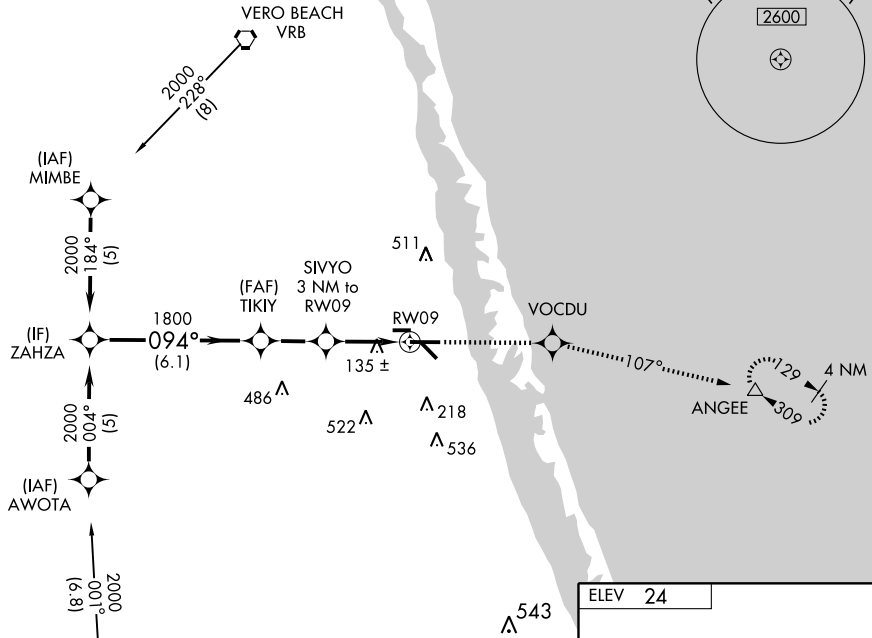
APP CRS	Rwy Idg	6492
094°	TDZE	23
	Apt Elev	24

⚠ When local altimeter setting not received, use Vero Beach altimeter setting and increase all MDA 40 feet; increase LNAV Cat D visibility ¼ mile.
⚠ VDP NA when using Vero Beach altimeter setting. DME/DME RNP-0.3 NA.

MISSED APPROACH: Climb to 2000 direct VOCDU and via 107° track to ANGEE and hold.

ATIS 134.825	MIAMI CENTER 132.25 370.9	FORT PIERCE TOWER ★ 128.2 (CTAF) 0	GND CON 119.55
------------------------	-------------------------------------	--	--------------------------

Procedure NA for arrivals on VRB VORTAC
 airway radials 182 CW 228.

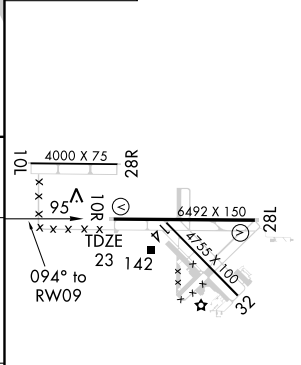
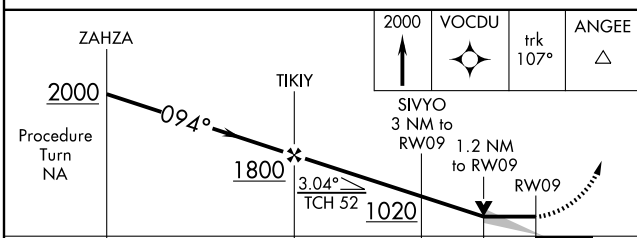


SE-3, 22 OCT 2009 to 19 NOV 2009

SE-3, 22 OCT 2009 to 19 NOV 2009

Procedure NA for arrivals at SHEDS
 via V531 southeast bound.

ELEV 24



CATEGORY	A	B	C	D
LNAV MDA	440-1	417 (500-1)	440-1¼	417 (500-1¼)
CIRCLING	460-1 436 (500-1)	480-1 456 (500-1)	480-1½ 456 (500-1½)	580-2 556 (600-2)

REIL Rwy 10R 0
 MRL Rwy 10L-28R, 10R-28L,
 and 14-32 0