

NDB RWY 28L

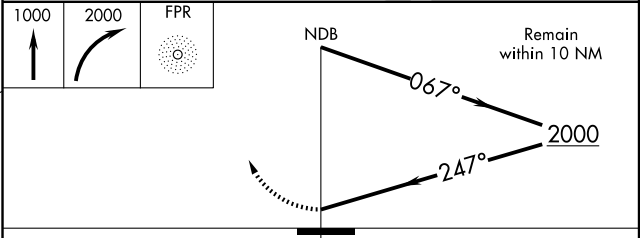
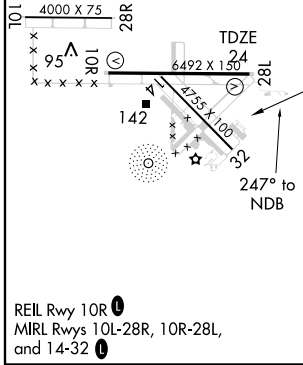
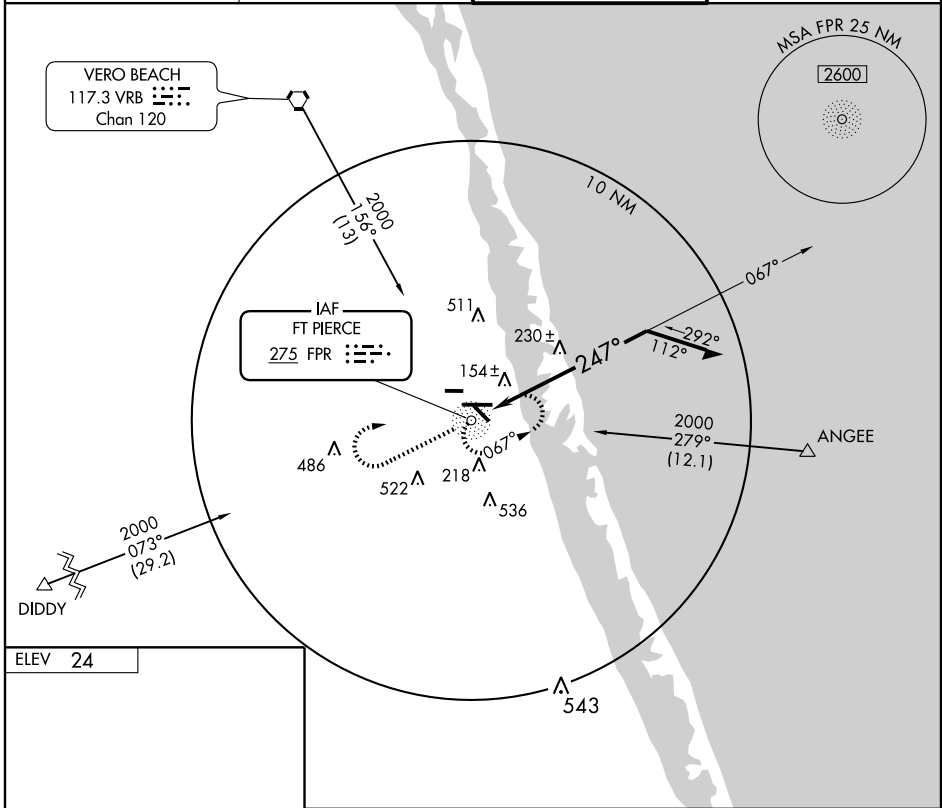
FORT PIERCE/ST. LUCIE COUNTY INTL (FPR)

NDB FPR 275	APP CRS 247°	Rwy Idg 6492
		TDZE 24
		Apt Elev 24

⚠ When local altimeter setting not received, use Vero Beach altimeter setting and increase all MDA 40 feet.
⚠ Visibility reduction by helicopters NA.

MISSED APPROACH: Climb to 1000 then climbing right turn to 2000 direct FPR NDB and hold.

ATIS 134.825	MIAMI CENTER 132.25 370.9	FORT PIERCE TOWER * 128.2 (CTAF) 0	GND CON 119.55
------------------------	-------------------------------------	--	--------------------------



CATEGORY	A	B	C	D
S-27	640-1	616 (700-1)	640-1 ³ / ₄ 616 (700-1 ³ / ₄)	640-2 616 (700-2)
CIRCLING	640-1	616 (700-1)	640-1 ³ / ₄ 616 (700-1 ³ / ₄)	640-2 616 (700-2)

SE-3, 22 OCT 2009 to 19 NOV 2009

SE-3, 22 OCT 2009 to 19 NOV 2009