

LOC/DME I-FJD 110.55 Chan 42 (Y)	APP CRS 094°	Rwy Idg 6492 TDZE 23 Apt Elev 24
--	------------------------	---

ILS or LOC RWY 10R

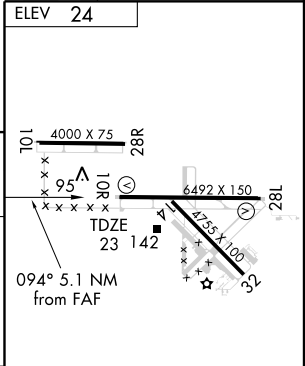
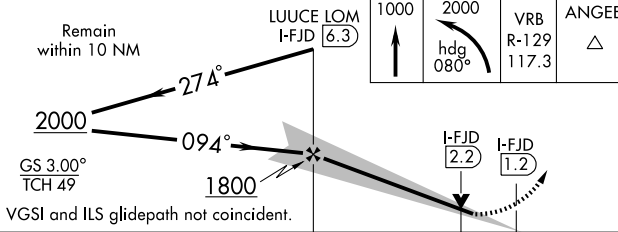
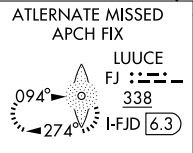
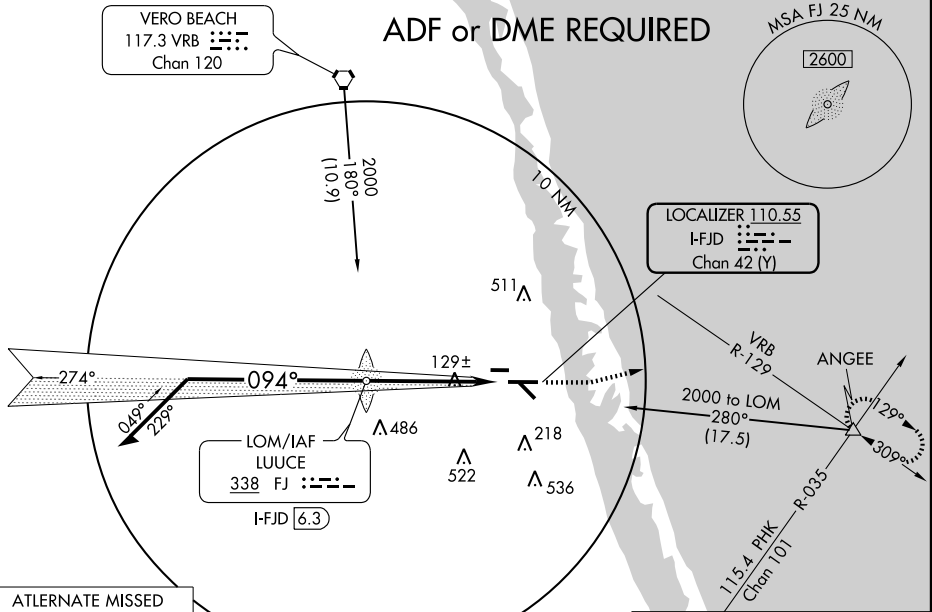
FORT PIERCE/ST. LUCIE COUNTY INTL (FPR)

⚠ When local altimeter setting not received, use Vero Beach altimeter setting and increase DA to 254; increase all MDA 40 feet.
⚠ VDP NA when using Vero Beach altimeter setting.
 Autopilot coupled approach NA below 720 MSL.

MISSED APPROACH: Climb to 1000 then climbing left turn to 2000 via heading 080° and via VRB VORTAC R-129 to ANGEE INT and hold.

ATIS 134.825	MIAMI CENTER 132.25 370.9	FORT PIERCE TOWER ★ 128.2 (CTAF) 0	GND CON 119.55
------------------------	-------------------------------------	---	--------------------------

ADF or DME REQUIRED



CATEGORY	A	B	C	D
S-ILS 9		223-3/4	200 (200-3/4)	
S-LOC 9		380-1	357 (400-1)	380-1/4 357 (400-1/4)
CIRCLING	460-1 436 (500-1)	480-1 456 (500-1)	480-1/2 456 (500-1/2)	580-2 556 (600-2)

REIL Rwy 10R **0**
 MRL Rwy 10L-28R, 10R-28L, and 14-32 **0**

FAF to MAP 5.1 NM

Knots	60	90	120	150	180
Min:Sec	5:06	3:24	2:33	2:02	1:42

SE-3, 22 OCT 2009 to 19 NOV 2009

SE-3, 22 OCT 2009 to 19 NOV 2009